

The Three Colnes Parish Magazine

Pg 6 Remembrance Service

Pg 19 Fifteen Remembered

Pg 20 Road Safety

Pg 27 Energy Project

A Magical Night by Clare in Greenstead Green

November 2024



DAVID
BURR

Sales, Lettings & Managed Holiday Lets



Bury St Edmunds
01284 725525
bury@davidburr.co.uk

Holiday Lets
01787 888698
support@davidburrholidaylets.co.uk

Long Melford
01787 883144
melford@davidburr.co.uk

Castle Hedingham
01787 463404
hedingham@davidburr.co.uk

Leavenheath
01206 263007
leavenheath@davidburr.co.uk

Newmarket
01638 669035
newmarket@davidburr.co.uk

Clare
01787 277811
clare@davidburr.co.uk

London SW1
0207 839 0888
london@davidburr.co.uk

Woolpit
01359 245245
woolpit@davidburr.co.uk

davidburr.co.uk

Contents



4. Welcome from the Editor
5. The Three Colnes Churches Contacts; Pastoral Care; Lunchtime Recital
6. Remembrance Service
7. Thoughts for the month
8. Services for November
9. Earls Colne Primary School
- 10-11. Colne Engaine Primary School
- 13-16. Gardening;
13. Brew n' Chat;
17. Ukraine Humanitarian Aid Appeal
18. Inside Our Lives
19. Fifteen Remembered
- 20-21. Road Safety
22. Village History, Colne Engaine
- 24-25. Remembrance
26. Crime Prevention; Rainy Day Grant
27. Community Energy Project
28. St. Andrews Book Club; Film Club
- 33-36. Earls Colne Heritage Museum
- 38-39. Four Colnes Horticultural Society
40. Christmas Dedicate A Star
41. Carols On The Green, Colne Engaine
43. Christmas Starts Here, Earls Colne
44. Puzzle Page (answers on pg. 47)
- 45-46. Brick Meadows;
Courtauld Memorial Hall
39. Fundraising for St. Andrews, EC
47. Recipe Corner
49. Going Walk About
51. Village History, Earls Colne
- 52-53. Parish Councillors
54. Braintree Area Foodbank
55. Essex and Suffolk DaRT bus service
- 56-57. Three Colnes Village Diaries
58. Useful Numbers;
Advertisers' Index

Editorial

Editor: Sue Kenneally

C/O. The Vicarage, 20 Swallowfield, Earls Colne, CO6 2SW. T: 07930 372219

E:threecolnesmagazine@gmail.com

All copy should be sent to Sue.

Design: Jonathan White

E:designthreecolnesmagazine@gmail.com

Advertising: Catherine Doran

T: 07747 864870

E:adsthreecolnesmagazine@gmail.com

Advertising

All advertising enquires to be sent to Catherine.

Readers, please remember to mention this magazine if you answer any of the advertisements.

We welcome advertising in our magazine, the income from which helps to cover production costs. This does not imply any endorsement or approval of the products and services mentioned in the advertising.

This magazine is produced for the villagers of the Three Colnes, consisting of White Colne, Colne Engaine and Earls Colne, by St. Andrew's Parish Churches.

Website Addresses

www.colnechurches.com

www.colne-engaine.org.uk

www.earlscolne-pc.gov.uk

www.whitecolneparishcouncil.gov.uk

FOR THE DECEMBER '24 / JANUARY '25 ISSUE PLEASE PROVIDE

SUBMISSIONS BY 3RD NOVEMBER 2024

Please provide Editorial in Word and Advertising as .jpg file

Welcome



What a month of lights! We have had some amazing sky scape this last month, especially at night, with a bright Hunter's Moon in the latter half of the month, and for those of us lucky enough to see, the Northern Lights (Arora Borealis) made a magnificent display on the 9th/10th October. The front cover was taken by a Clare who is in Earls Colne, midway through the display which was strikingly visible to the naked eye, but enhanced more so through the lens of a phone camera on night mode.



This month, we have jam packed the magazine with as much as we can, from shoebox gifts for those in Ukraine (Pg 17), to Christmas Carols on Colne Engaine Green (Pg 41). We also have a number of items commemorating Remembrance Day on pages 6, 19, 24, 33. Also don't forget to Dedicate a Star for the Colne Engaine Church renovations – see page 40 for details.

White Colne have put together a great information day on how to reduce carbon emissions when building and renovating - Following works to decarbonise White Colne Village Hall, the Colne Valley Community Energy Project invites you to our special day showcasing sustainable wealth creation for your business, parish and home life. See page 27.

Driving around this week, I popped into Blake House Craft Centre (CM77 6SH) – I have lived this way for nearly 20 years, and never been there before! What a gem. If you have nothing to do for the day, I would recommend a mooch over there. There is an amazing haberdashery shop, a wool shop, a shop to build your own motorbike! A doll house shop, a beautiful art studio with some fabulous art on display, a bicycle shop, a nail bar and a card shop. An alternative health shop, for those who dabble, and a paint shop, I am sure there is more, but we ended up lunching in the café, then had to come back for the school run! But to top the visit off, a Mumma Peahen with her two babies came out for a walk!

We are still needing volunteers for the magazine, so please do drop me an email if you are interested in any positions.

Finally, before I sign off, I would like to say a massive thank you to our sponsors for the last year – Brooks Transport www.brooks-transport.co.uk, 01787 476624, based on the Earls Colne Business Park (see pg 39). Without their support we would not have been able to keep our printing costs and therefore our advertising costs, as low as we do. We welcome new sponsors to the magazine for the next year – Hobbs Estates, 01787 222674 www.hobbsstates.co.uk who manage the employment spaces on the Earls Colne Business Park.

Happy Autumn Days, Sue

The Three Colnes Churches

For Baptisms, Weddings and Funerals: please contact The Reverend Mark Payne on 01787 220347 or colnesvicar@gmail.com 20 Swallowfield, Earls Colne, CO6 2SW.
Reverend Sharon Quilter (Associate Priest) revdsdq@gmail.com

For all other matters: please contact the Church Wardens of the Church in question:

COLNE ENGAINE

George Courtauld - 07968 496235
georgecourtauld@aol.com

PCC Secretary: Candy Robson

Church Warden Vacancy:

St. Andrew's Church, Colne Engaine

WHITE COLNE

Mr. Christopher Chamberlain
01787 222200 wccw@hotmail.co.uk

EARLS COLNE

Mr. Ray Wood & Mrs. Helen Sherfield -
07908 138853
ecchurchwardens@gmail.com

PCC Secretary: Caroline Smith
standrewearlscolne@gmail.com

Treasurer: Helen Brooks
ecpctreasurer@gmail.com



Pastoral Care

Are you lonely, bereaved, unwell, feeling low or simply wanting someone to listen? Our Pastoral Care Team are here to help. We serve the three Colnes and are happy to talk with you, in person, on the phone or via zoom.

Just call 01787 220347 or email: pastoralcare.threecolnes@gmail.com

Lunchtime Recital

Due to a family illness, Kate Harris was unable to perform for us in September. We hope to see her in 2025. However, to close our Recital Season, it has been decided to hold a Christmas themed Lunchtime Recital on Thursday 12th December at St. Andrew's Church, Earls Colne starting at 1 pm and going on until around 2 pm. Refreshments will be served from 12.15 and, as usual it's free entry with retiring donations. We hope you will be able to join us.

Full details will appear in December's Parish Magazine. With best wishes and thanks for all your support during 2024, **Liz Pottinger.**



**Remembrance
Sunday
10th November
2024**

**ST ANDREW'S CHURCHES
10AM EARLS COLNE
10.15AM COLNE ENGAINE
3PM WHITE COLNE**

WE WILL REMEMBER THEM



Thoughts for the month



“Remember, remember the 5th November.”

Do people still learn this opening line from this poem I wonder, and what about the rest of it?

Remember, remember!

The fifth of November,
The Gunpowder treason and plot;
I know of no reason
Why the Gunpowder treason
Should ever be forgot!...

And on it goes, describing all that led to the tradition of an annual Bonfire Night. Thank goodness for good ecumenical relations with our Roman Catholic sisters and brothers these days!

The 5th November is held warmly in my heart for another reason – it was the date I was licensed to the Halstead Area Team with a particular responsibility for the Three Colnes, and this year marks my fifth anniversary. How time flies when you’re having fun.

It feels as though November, or at least the start of it, is a month for remembering.

Starting on the 1st - All Saints Day, when we remember all the saints that have gone before us, and when we are also encouraged to see the ‘saintly’ in ourselves and in one another. So many people quietly go about caring for and loving those in need – living Saints, here and now.

On the 2nd – All Souls Day, we remember all those we love who have died. This is an important time to reflect on our relationships with those not physically with us anymore.

As November continues and autumn turns into winter, with dark evenings and colder weather, let’s do all that we can to remember those in need in our communities now. Perhaps we can make a special effort to check on an elderly neighbour who lives alone, to donate some food to the Foodbank collection points at Earls Colne and Colne Engaine churches, to fill a shoe box with Christmas presents for women and children in Ukraine – see later in this Magazine for details.

And finally, remember that you need to be kind to yourself too – give yourself a bit of time and space before the business of December, when we remember how God loves us so much that he sent his Son into the world to share our lives.

Mark

Services for November



Date	Time	Church	Service
Sat 2 nd	5pm	Earls Colne #	All Souls Day Service of Remembrance
Sun 3 rd	10am	Earls Colne #	Morning Worship
	10am	Colne Engaine	Morning Worship
	10am	White Colne	Holy Communion
Wed 6 th	9.30am	Earls Colne	Holy Communion
	3.30pm	Colne Engaine	3:30 Express
Sun 10 th	10am	Earls Colne #	Remembrance
	10.15am	Colne Engaine	Remembrance
	3pm	White Colne	Remembrance
Wed 13 th	9.30am	Colne Engaine	BCP Holy Communion
Sun 17 th	10am	Earls Colne #	Holy Communion – Stewardship
	10am	Colne Engaine	Mattins
	10am	White Colne	Morning Worship
	6.30pm	Earls Colne	Café Church
Wed 20 th	9.30am	Earls Colne	Holy Communion
Sun 25 th	10am	Earls Colne #	Morning Worship
	10am	Colne Engaine	Holy Communion Baptism
Wed 27 th	9.30am	Earls Colne	Holy Communion
Sat 30 th	7pm	Colne Engaine Village Hall	Three Colnes Agape and Bring & Share Super

These services will be live-streamed on Zoom and, together with our Online Services, on Facebook Live. Details of our Zoom link and our Facebook Page can be found at www.colnechurches.com/pew-news

In addition to the above services, at 9am on each Saturday morning you are invited to Morning Prayer on Facebook Live.

Primary School

EARLS COLNE



We had our first ever Harvest Festival in the church instead of in the school on the 10th October. We filled the whole church and had a wonderful time singing together and talking about Harvest and what this time of year means for so many people. Don't worry, if you are a parent to one of our children, you haven't missed a parent event, as we are unable to fit our whole school AND parents into the church, we decided to celebrate this one together as a school.

A huge thank you to Rev Mark for making us feel so welcome in the church and educating us about the baked bean(!), and to all the children for their excellent behaviour and fantastic songs, poems and offerings. Such a heartwarming event of thanks!



Jakki Sibley, Headteacher



Luxury Private Hire
Swimming Pool
for your exclusive and regular use



whites farm
swimming pool

White Colne, Colchester CO6 2QF
t 01787 227 064 e pool@whites-farm.co.uk
www.whitesfarmswimmingpool.com

Halstead, Braintree & Haverhill

**Physiotherapy
& Sports Injury
Clinics** *Reduce pain
Promote healing*

Specialising in the treatment
of spine & joint problems,
muscular issues, headaches,
dizziness, back & neck pain.

Musculoskeletal, Vestibular
& Neurological Rehabilitation
from our expert practitioners.

*Evening & Saturday
appointments available*

01787 478789

2 Market Hill, Halstead CO9 2AR

www.halsteadphysiotherapyclinic.co.uk



October has been a very busy months at Colne Engaine School. Although the weather has turned autumnal it hasn't stopped us getting out and about in the local area and beyond!

This month our oldest and youngest children participated in Road Safety talks and workshops delivered by Essex Highways. Oak Tree Class's parents also got involved and joined us to support their children's learning. Sycamore Class listened to a talk and then went out in groups to put what they had learnt into practise.

The school choir took part in the Chelmsford Cathedral Creationtide Service and our song and readings were linked to the theme of 'To Hope and Act with Creation'. We sang 'I Am The Earth' along with St. Andrew's School and our readings told the congregation about the work of our school's Eco Club.

The club plants flowers and trees and have grown pumpkins, strawberries, spinach, butternut squash and more! They are also helping a village project where we are going to plant wildflowers in our village and school and have made bug hotels, helping to provide habitats for insects and mammals.

Our Harvest Service was held at St. Andrew's Church and had a theme of 'A Harvest of Hope' linked to the Chrisitan Aid theme. The children sang harvest songs, acted out

Next Generation Woodstoves
To comply with new efficiency & emission regulations

Colne Stoves Ltd

Earls Colne & Bury St Edmunds

www.colnestoves.com
01787 222 608

Primary School (Cont'd)



COLNE ENGAINE

poems and talked about areas of the world that are in food crisis. We prayed for leaders to act and talked about what we can do to help in our own small ways as a school and community. Thank you to everyone who donated to The Braintree Food Bank via school this year.

Our curriculum this term has a science focus, and we are weaving the theme of 'Being a Scientist' throughout our work. This involves investigating and experimenting as well as looking at key scientists throughout history. Rowan class have been working with some amazing fossils and rocks and experimenting with soil!

In collective worship, we have been promoting and celebrating our school values; ERICERS (empathy, responsibility, integrity, compassion, equality and respect) and have reflected on trust using stories of Joshua and loyalty by learning about Ruth. Rev. Mark led one of our worship sessions by being led around a hall full of children with his eyes shut – quite a demonstration of trust!

October also included some work on anti-racism. Sycamore class wrote Anti-Racism Charters and we held a 'Red for Respect' Day, linked to our school uniform colour.

Please let people know about our open day on 21st November. The day is for parents of children starting Reception in September 2025 and will include a talk from myself at 9.30am and a tour of the school with some of our Year 6 pupils. **Lisa Dale**, Headteacher.



SUPPORT YOUR LOCAL HIGH STREET

LET'S CHANGE THE WAY WE SHOP

Every day store cupboard essentials, cleaning products, fresh coffee & cakes with sourdough every Friday.

Tuesday to Friday 08:30 - 16:30
Saturday 09:00 - 15:00

Ecolnes Refillery 75 High Steet, Earls Colne
www.ecolnes.com



Ecolnes



[ecolnes_refillery](https://www.instagram.com/ecolnes_refillery)



07861152599

Tree Surgeon



Blake Tree Care 

Providing excellence in:

- Tree Felling
- Canopy Reduction
- Hedge Cutting
- Garden Clearance
- Tree Shaping and Pruning
- Stump Grinding
- Pollarding
- Emergency Tree Work

Free Consultation for Small and Large Jobs

Public Liability Insurance

M: 07515288736

O: 01787 228341

info@blaketreecare.co.uk

www.blaketreecare.co.uk



"A very competitive price and a VERY tidy job" ★★★★★

Gardening



NOVEMBER NOVEMBER, JOBS TO REMEMBER

So, you think there's nothing to do in the garden now, oh no, you don't get off that easy, just check out this list.

There are so many things that can be done now when the growth in the garden has slowed down and there is less to look after, you know, those "I'll do it when I get time jobs", well its official, now you have time.

How's your butt? Could it do with some work? Empty it out, clean out the sludge in the bottom, don't worry about the water, I'm sure it will be full again when you need it. If the tap leaks around the seal, loosen it off, let it dry out completely and seal it with a silicone sealant before tightening it up again. Or, if you've had a problem getting a watering can underneath the tap, before you put it back, raise it on some bricks or whatever you have handy. If it stands on soil, dig a hole in the ground at the front under the tap to make more room for the can.

What about the shed? Does the roof leak? Could it do with a coat of preservative, or maybe it's time to jazz it up with a bit of colour, we often get clear dry days this time of year, and water-based paints and treatments dry very quickly.

Look into getting gardening machinery serviced and sharpened, the winter months

BREW N' CHAT

ST ANDREW'S
EARLS COLNE:
EVERY WEDNESDAY
COLNE ENGAINE:
1ST THURSDAY
OF THE MONTH
2- 4PM

**GOOD COFFEE &
REFRESHMENTS
AND EVEN BETTER
COMPANY!**

PLEASE JOIN US FOR A

**Christmas
Shopping
Event**

SUNDAY 17th NOVEMBER
FROM 11AM - 4PM

FIND SPECIAL CHRISTMAS PRESENTS FROM LOCAL
BUSINESSES
FREE PARKING

COLNE ENGAINE VILLAGE HALL (AKA THE COURTAULD MEMORIAL HALL)
1 STATION ROAD, COLNE ENGAINE CO6 2ES
WWW.COURTAULDMEMORIALHALL.CO.UK

Gardening (Cont'd)



aren't so busy for 'the mower menders' so you could get sorted and tucked away ready for Spring, instead of joining the queue when the grass suddenly takes over. If nothing else any petrol driven machinery that is not needed over winter should be drained of fuel, it can become stale and cause problems when trying to start the machines in Spring.

Look at your fences, if they need sorting now's the time, not so many plants to clamber over and again it is possibly easier to get someone booked in during the winter months (unless we have another hurricane, then you won't be able to get anyone for love or money). We do get high winds through the winter though, so if your fence is wobbly its worth pre-empting it and be assured its secure, rather than having to clear up the mess after: "a stitch in time is worth two in the bush" or something like that.

What about paved areas? Crack on with a pressure washer, it's amazing the difference once the paving is cleaned up, in these murky months it can help make the garden feel brighter, at the same time any loose jointing will show up and, in the right weather, repointing would be beneficial. Repointing, saves water getting under the slabs and freezing, causing them to loosen and lift - meaning more work in the future. Filled



Colne Valley windows Your local double glazing company

Windows, Doors, conservatories, Bi-Folding Doors, Soffits, Facias and Guttering, uPVC and Aluminium, Shop Fronts, Manual and Automatic Entrances and much more!!



- ✓ Transferable 10 Year Insurance Backed Guarantee
- ✓ Over 30 Years Experience
- ✓ Free Quotation
- ✓ Local Family Run Business

**For your free quotation
please call us on 01787 827382**



Website www.colnevalleywindows.co.uk
Email: info@colnevalleywindows.co.uk

Gardening (Cont'd)



joints also reduce weed growth, (it's that bird in the bush thing again).

There is a bit of pruning to do in the Hobbits Garden this month, and through the winter months when deciduous trees and shrubs are dormant, among them are the Buddleia, I prune these down about halfway now, this encourages new growth from the base and in February I will prune again to shape when there should be good healthy shoots appearing. Roses (*Rosa*) can be damaged by 'wind rock' loosening the soil round the roots, so these too I cut down, just a third of the growth for now as I will be pruning again in February. We have Apples (*Malus*) and Pears (*Pyrus*) in the garden too so I will carry out the winter pruning on these, taking back this seasons growth to within two to three buds from the junction with the old wood, this encourages more woody spurs which produce flowers then fruit. I will be cutting all the hedges back once they are bare of foliage to get them back to a neat and manageable size, so that as they grow back next season I can regularly 'tip them' only taking off the soft growth to keep things in shape.

If you have tender plants growing in pots it's probably best to wrap them with horticultural fleece to protect them from the cold, better still if you have room, move them into a greenhouse or conservatory, heating is helpful but not normally necessary, the

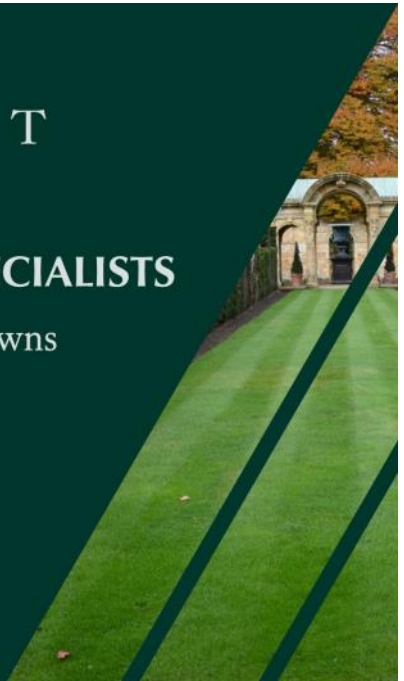
THE LAWNOLOGIST

PREMIUM GRASS CARE SPECIALISTS

- ▶ Equipped for prestige larger lawns
- ▶ Bespoke seasonal treatments
- ▶ Tailored lawn care plans

01206 688425
07539 050814

THELAWNOLOGIST.CO.UK
INFO@THELAWNOLOGIST.CO.UK



Gardening (Cont'd)



shelter from frost is usually enough.

Someone gave me a tip about storing onions in the wife's tights, it does work, but lately she has been complaining about the smell in her knicker draw.

There are still veg that can be sown outdoors in November, Hardy broad beans (*Vicia faba*) Aquadulce Claudia will overwinter producing early crops in Spring, sow the beans in rows 9" (23cm) apart and between rows. Avoid exposed sites, as high winds can be a problem, if the weather is extremely cold over Winter it may be worth protecting the plants with fleece.

Peas (*Lathyrus oleraceus*) 'Kelvedon Wonder' or 'Meteor' will also work. Sow the peas in rows 2" (5cm apart) and 6" (15cm) between rows, push twiggy sticks in the ground along the rows to support the plants as they grow. Onions (*Allium cepa*) Shallots (*Allium cepa gr. aggregatum*) and Garlic (*Allium sativum*) can all go in now, Onions and Garlic can go in rows with 4" (10cm) between sets or cloves, and 12" (30cm) between rows, push them in the ground (pointy end up) and leave the tip poking out of the soil, Shallots are planted the same, but with 7" (18cm) between sets and 12" (30cm) between rows, cover them with fleece or cloches, sticks, barbed wire, electric fence or all of the above to keep the birds from pulling them out of the ground, maybe even consider sitting in a rocking chair with a shotgun.

Later's Taters, Keep Calm and carry on weeding!

Gary Hoskin

Steve White Electrical Services

Part P Domestic Installer

Fully qualified, insured and guaranteed

- Extra sockets/lights
- Fuse board changes
- Power Showers
- Fault finding/repairs
- Outside power to garden/garage
- Immersion Heaters

FREE ESTIMATES

01787 281254 or 07920 841041

FILL, GIFT WRAP AND LABEL A SHOEBOX WITH GENDER AND AGE AS A CHRISTMAS PRESENT FOR A CHILD OR **WOMAN IN UKRAINE.** TAKE TO THE BACK OF ST ANDREW'S EARLS COLNE BY SUNDAY 17TH NOVEMBER. FILL YOUR BOX WITH TOYS, GAMES, SCHOOL SUPPLIES, TOILETRIES, CLOTHES, CHOCOLATES OR SWEETS AS APPROPRIATE BUT AVOID FRESH FOODS OR FRAGILE ITEMS ENQUIRIES TO REV MARK - COLNESVICAR@GMAIL.COM

BOXERS BARBERS



**4 UKRAINE
HUMANITARIAN AID**



Inside Our Lives

Chris Winter – RAF Veteran and ex-Scout

Chris invited me to his home to talk about his life in the Scouts and to see his late wife's Scout memorabilia. He had been involved in the Scouts for many years, now aged 91 he wanted to share with a wider audience a little more about his life and times.

He started his Scout journey as a Tenderfoot at Holy Trinity 1st Taunton, Somerset. Moving on to the 6th Taunton St Marys and then 1st Taunton Wilton when he joined the Red Cross as a cadet in 1943.

Lasting only a short while there, Chris found that he preferred to support the leader, making sure the younger Scouts were well looked after. He tested my knowledge on my knots (it has been a while since I have tied any!) I'm pleased to say I can still tie a few!

Jennie his wife, was, in her own right, a long-lived Scouter; being a certified Assistant Cub Master in 1952 at Theydon Bois, and then Cub Master for the 1st Abridge in Epping and Ongar in 1959. Chris still has all her memorabilia and certificates, including a Scout hat which is waterproof inside and out – why I hear you ask? So, they could use it as a wash bowl obviously – what were you thinking!?!

Whilst I had come to talk about the Scouts, we digressed to his service in the RAF and love of all thing's family. Starting out at RAF Currany then moving around until his last stint as a Corporal Marine Fitter at RAF Calshot, though short lived, it was a great source of memories and experiences, and he is still best friends with one of his old colleagues.

Chris has a great love for the local area he now lives in and is leaving his late wife's Scouting memorabilia as a legacy of her life to the Scouts in Earls Colne. **Ed.**



FIFTEEN REMEMBERED

A PAINSTAKINGLY RESEARCHED & FULLY
ILLUSTRATED HISTORY

36 pages including the story of Bomber Command and biographies
of all the men who died in the clouds above Earls Colne & Great Tey
80 years ago on the 20 September 1944



Minimum suggested
donation £5

EARLS
COLNE
HERITAGE
MUSEUM



Road Safety

We live in a very rural part of Essex, where we are dependent on walking along unlit, unpaved roads. Our villages are growing, and road safety is becoming more paramount, especially with the ever-increasing pothole epidemic leaching along our roads. As the nights are now well drawn in, and the mornings are brighter later, we need to be more aware of how to stay safe.

Supporting the charity BRAKE who promote road safety, we wanted to make sure all residents were aware of their Road Safety Week – 17-23 November. Brake support families after road accidents and crashes, and are striving to reduce this need by raising awareness, and promoting safe road usage.

Keeping safe, comes down to the individual, and by making small adjustments we can reduce our risk of injury, especially at night, by adhering to the Highway Code for pedestrians, cyclists and motorists.

Rules for pedestrians when there is no pavement:

If you are in a small group, **keep to the right-hand side of the road** so you can see oncoming traffic. Keep close to the side of the road and be prepared to walk in single file. If you come across a sharp right-hand bend it may be safer to cross to the left-hand side of the road and cross back after the bend.

ESSEX AND SUFFOLK ROOFING



ROOF REPAIRS -TRADITIONAL TILING – FLAT ROOFS
Fascia, Soffits, Guttering – Carpentry. Cladding

EARLS COLNE - 01787 224496 – 07795 554442

essexandsuffolkroofing@gmail.com

David Yallop, 6 Oddcroft, Colne Engine, CO6 2ET

Road Safety (Cont'd)

If you are in a large group keep to the left. There should be a look-out at the front and back of the group **wearing fluorescent clothes in daylight and reflective clothes in the dark**. At night, the front look-out should have a white light and the rear look-out a red light. People on the outside of large groups should also carry lights and wear reflective clothing.

Stay safe

Help keep yourself and others safe by:

- Using the pavement, or path along the side of the road, where one exists
- Using safe crossings where possible and following the Green Cross Code
- Wearing or carrying something bright or fluorescent to help others see you
- Using reflective materials at night such as armbands, sashes or jackets
- Taking special care with young children, pushchairs and wheelchairs

Rules for cyclists at night:

At night your cycle **MUST** have white front and red rear lights lit. It **MUST** also be fitted with a red rear reflector (and amber pedal reflectors, if manufactured after 1/10/85). White front reflectors and spoke reflectors will also help you to be seen. Flashing lights are permitted but it is recommended that cyclists who are riding in areas without street lighting use a steady front lamp.

For more information and resources, please visit the following websites:

- <https://www.think.gov.uk/education-resources/>
- <https://www.gov.uk/guidance/the-highway-code/rules-for-pedestrians-1-to-35>
- <https://www.gov.uk/guidance/the-highway-code/rules-for-cyclists-59-to-82>
- <https://www.brake.org.uk/road-safety-week>
- <https://saferessexroads.org/parents-and-children/>



CRALIN
Property Services

Domestic & Commercial Maintenance/Refurbishment



DRAINAGE

- Blocked Drains/Toilets
- High Pressure Water Jetting
- Pipe Relining
- CCTV Camera Surveys
- New Installations
- 24hr callout

Call Craig on 07980 297068

email: cralinpropertyservices@yahoo.com

Village History

COLNE ENGAINE



A History of a Church Service with Communal Singing

17th November 2024 10am, Colne Engaine church

I don't know whether anyone's missed me — I haven't written anything for the magazine for a while, but I haven't been entirely quiet. Occasionally I take Sunday morning services in Colne Engaine. I usually lead the service of Mattins, which is on the third Sunday of the month; we're one of the few churches in the area that retains this service from the old Book of Common Prayer (BCP). The BCP is often known as '1662', which is the date of its modification: it was first written in 1549, during the reign of Edward VI and not long after the Reformation. If you've read the pieces I have written for the magazine over the years you will have realised that I am interested in the history of the English church: this prayer book can be considered as the foundational work of the Church of England.

The language can be off-putting and the service a bit hard to follow so I thought when I next take the service, on 17th November, I would explain it as we follow it. This will be instead of giving a talk or homily (I don't ever claim to preach a sermon, which I'm neither capable of, nor qualified to do), so it still shouldn't take more than an hour! And there will be hymns if you enjoy communal singing. If you're at all curious about the traditions of the Church of England then please come along at 10 am. The church is your church, whether or not you usually attend services!

Cherish our Church, **Cate Gunn**

Amerio Forestry Contracts Ltd

Colne Engaine, Colchester, CO6 2EZ

- Quality Seasoned Logs Delivered Loose Or In Bulk Bags
- Tree Surgery
- Woodland Management, Thinning Out
- Tree Shearing / Clearance Work
- General Mini Digger Ground Works & Ditching
- Stock Fencing
- Full Public Liability Insurance
- Friendly Service



For a free quote contact

07498634632 or afcontractsLtd@yahoo.com

QUAKER MEETING HOUSE

EARLS COLNE

is available for hire.

A warm and friendly venue for leisure and educational groups, tea parties, children's parties and alcohol free events.

£10.00 per hour

Sunday Meeting for Worship 10.30am

Please call 01206 240929 for details.



DIRECT MAIL
& CAMPAIGNS



PRINTING
& DESIGN



PROMOTIONAL
PRODUCTS

R ENVELOPE INSERTION POSTERS BRANDED CLOTHING DOOR TO DOOR
NS FULFILMENT BROCHURES EXHIBITION STATIONERY LEAFLETS
BANNER STANDS LEAFLETS BRANDED PENS AND MUCH MORE...



CONTACT US TODAY

No matter the size of your requirements, we are equipped to assist you.

01255 221322

hello@thedsgroup.co.uk

thedsgroup.co.uk



Remembrance

My Uncle Stan was killed on the Beachhead at Anzio in 1944, just the day before the Fifteenth Army finally broke through the defences and went on to liberate Rome after six months of bloody, trench warfare.

Operation Shingle had taken 36,000 soldiers from the impasse at the Gustav Line (Monte Casino) and shipped them round to Anzio and Nettuno to distract and divide the German forces.

I don't want to glorify war by the emotionless discussion of battle-plans, strategy and tactics, but know I am only just beginning to understand how my family would have felt about some of the decisions being made at that time. How they would have reacted to the news about the troops trapped on the beaches (actually salt-marshes) many of which the Germans were allowing to flood again.

We visited Uncle Stan's grave at the CWG cemetery at Anzio Beachhead last year, it's now by a busy road that feeds the growing holiday resorts along that bit of coast. Yet it was perfectly peaceful, perfectly kept, with every grave the same, no hero greater nor less than the next. For Uncle Stan and all those that fell at Anzio I painted a picture with words.

Green Glaze Windows, Doors & Conservatories Quality as standard at affordable prices

✓ comprehensive 10 year warranty ✓ free insurance backed guarantee

FOR A FREE QUOTATION CALL 01787 274475

or email sales@greenglaze.co.uk

www.greenglaze.co.uk

Come and visit us 55 High Street, Halstead CO9 2JD



ultraframe



FENSA
Registered Company



We are a green environmentally friendly home improvement company, committed to reducing our carbon foot print.

24 / www.colnechurches.com

Remembrance (Cont'd)



The Beachhead

It's eighty of our years into your eternity,
and the relentless tide still tries to wash
the past

from the beach where you fell.

Just a heartbeat from the eternal city,
an echo was born that day,
blasted out from the recoil of that fatal
blow.

I wasn't here to share the pain,
and be cast down by the burden of the
news,
never to fully recover.

But I felt that echo – I still feel that echo,
The graves, the monuments, the years of
remembrance

honour your sacrifice, but have let you
down,

we have all let you down.

Heroes, resting in eternal equality,

You fought for peace,
our debt to you should be paid in that
currency.

Today, more than ever,
we must fight to turn the tide,
with renewed vigour
we must work for a world free from war.

© R A Wood



Need some help around the house or garden?

From regular gardening to
that indoor job you never
get around to, I could be
what you're looking for.
With skills in house and
garden maintenance.

**Call or text me for a chat
about your needs.**

Graham King
T: 07923 445128



Chris Oglesby
Plumbing & Heating Engineer

07971 233853
01787 582166

- Boiler Replacements
- Central Heating Systems
- Servicing / Breakdowns
- Landlord Checks
- Plumbing Installs / Repairs



Crime Prevention

Cyber Safety. We will be having a regular column to do with Cyber Safety, highlighting the latest ways con-artists are trying to separate you from your hard-earned money. There are so many scams out there, and the fraudsters are more aware of how to get around you.

This month we will look at a case highlighted by Radio 4 recently which involved a mother who received a phone call from her daughter...

Phone rings, mother picks up phone and the line is crackling. "Hello, who is this, I can't hear you" *Fraudster can hear the mother clearly, can work out if male or female, and approximate age.*

Phone text messages pings 'Mum, it is me, I am using my friend's phone as I have lost my bag. I can hear you, let me try again.' *Fraudster is guessing that the person is a parent, and setting the scene for the most plausible scenario – so the scenario may differ.*

Phone rings, mother picks up phone and the line is crackly again.

Phone text messages pings 'Mum, can you try calling me on this number, as I can hear you and you can't hear me'

Mother then calls the number, line is crackling again.

Phone text messages pings 'Well that didn't work, shall we just chat over text? I have lost my handbag and phone. I need to buy a new phone, so I can log into my internet banking account, then I can send you back the money for the phone is that OK?' They ask for you to pay it into their 'friends' account.

Some parents will part with their money, truly believing their child is in need.

To stop this happening to you:

- Firstly, set up a password amongst your nearest and dearest, and ask for the family password if you get any odd messages.
- Always ask the name of the person messaging you, (though this isn't a failsafe, in case they know your child, it will eliminate some).
- Ask them for some ID, such as your first dog's name, or grandpa's favourite chair, something only your family will know about.
- Hang up and call whomever is meant to be on the phone with you on their usual number, or at their workplace, and ask them if they are indeed trying to get hold of you. If it is a fraud, you'll know pretty quickly.

Three Colnes Churches Rainy Day Grant Scheme

Are you in hard times?
Fuel bills? Kid's uniform? Life Essentials?
Do you need a helping hand?
This support fund may be able to help.

If you live in White Colne, Colne
Engaine or Earls Colne and would like
to apply for a tax free grant
then please get in touch
with Revd Mark for an application
form or a confidential chat.

If you are in a position to be able to
contribute to this fund to help others,
again please contact Revd Mark:
01787 220347
colnesvicar@gmail.com



Community Energy Project

WHITE COLNE

Colne Valley Community Energy Project Showcase Day.

Saturday November 16th 2024 White Colne Village Hall .CO6 2QA

Following works to decarbonise White Colne Village Hall, the Colne Valley Community Energy Project invites you to our special day showcasing sustainable wealth creation for your business, parish and home life.

10.00 Coffee/tea and biscuits. Business and parish sector exhibition opens.

11.00 Chair: Jane Taylor, Chair, White Colne Parish Council

11.00 Lean2Green Business Grant: Mike Russell, Mkr Solutions Ltd

11.15 Commercial solar and battery installation: Kenny Easson, Powercircle

11.30 Creating an income stream from solar: Dr Somayeh Taheri Chief Executive Officer, Urban Chain

11.45 Air source heat pumps: Keiron Cahill

12.00 Thermal imaging, Insulation including cladding: Christopher Blomeley, Project Director, Colchester Community Energy

12.15 Achievements at White Colne Village Hall: Darran, Simcott Renewables

12.30 Local Government low carbon initiatives: Speaker tbc

12.45 Buffet lunch

1.45 Exhibition for the public and parish sector:

2.15 Chair: Jane Taylor, Chair, White Colne Parish Council

2.15 Local Government grants for retrofit: Ben Plummer, Climate Emergency Officer, Colchester City Council

2.30 Home Energy Assistance using Thermal Imaging: Christopher Blomeley, Colchester Comm Energy

2.45 Village Hall project title: Darran, Simcott Renewables

3.00 Selling your surplus solar energy: Dr. Somayeh Taheri. C.E.O. Urban Chain

3.15 Air Source Heat Pumps: Keiron Cahill

3.30 Pay as you Go contracts: Alex Templeton, Community Infrastructure Group

3.45 Trust Electric Heating: Olivia Hullah

4.00 Afternoon tea with cakes.

For your free tickets please contact: chairman@whitecolneparishcouncil.gov.uk or www.colnevalleycep.org or Eventbrite <https://www.eventbrite.co.uk/e/colne-valley-community-energy-project-showcase-day-tickets-1004522372457?aff=oddtcreator>



St. Andrew's Book Club meets on the second Tuesday of the month - **2.00pm** at **8 Coggeshall Road, Earls Colne.**

Our Next Meeting: **Tuesday 12th November 2024**

Our November book is *The Grapes of Wrath* by John Steinbeck. Drought and economic depression are driving thousands from Oklahoma. As their land becomes just another strip in the dustbowl, the Joads, a family of sharecroppers, decide they have no choice but to follow. They head west towards California, where they hope to find work and a future for their family, but what is awaiting their arrival . . . ?

New members are always welcome. For further details, please contact me on 01787 223843 **Margaret Hill.**



The nights are drawing in so time for a good chuckle and a dose of Irish charm to cuddle up with in this month's selection!

The Film -The Quiet Man - starring John Wayne and Maureen O'Hara

The Discussion - Wednesday 13th November 2024 gather at 6.45pm for a 7.00pm start

The Where - The Drapers, Earls Colne

For more information, contact Sharon (revdsdq@gmail.com), Kirsten (kpt1607@icloud.com) or Ray (rawood@me.com)

If you have watched a film that you feel would lead to a really good, deep, meaningful and engaging discussion, please let us know.



Period Property Services

We are a family-run business covering the Essex and Suffolk area.
Passionate about our work, paying attention to every detail.

- Lime pointing and plastering
- All aspects of roofing
- Damp proofing and drainage
- Extensions and alterations
- Decorating and repairs
- Landscaping and paving



079 89 56 8144



tudorpss1@gmail.com

WE PROVIDE COMPUTER REPAIR & UPGRADE SERVICES

**SARALA
COMPUTERS**

"Taking the 'St' out of IT"

Check and repair your computer
with our experienced technicians

Open Hours

Monday -Friday

09:00AM - 5:00PM

Sat

09:30 - 12:00pm

Contact Us!

01787 334040

47a High Street, Halstead

Essex CO9 2JD

Learn More: <https://sarala.co.uk>



TO RESERVE YOUR
CHILD'S PLACE, CALL:

07907 177146

The
BARN
Nursery School
COLNE ENGAINE

The Barn

WHERE THE EXTRAORDINARY HAPPENS EVERY DAY!



WELCOMING CHILDREN AGED 2.5 - 5 YEARS
PLEASE CALL FOR CURRENT AVAILABILITY

Offering child led provision within a nurturing, stimulating, enabling environment, our children develop into confident, resilient, independent, active learners who are not afraid to take risks and face challenges head on.

AM SESSION	LUNCH	PM SESSION
9.15AM – 12.15PM	12.15PM – 12.45PM	12.45PM – 3.45PM
£21.00	£3.50	£21.00

Prices from September '24. We accept 2 year, 15 & 30 Hour Government Funded hours. Accepted subject to availability. Additional service charges will apply.

✉ IWANTAPLACE@HOTMAIL.COM   [@THEBARNNURSERY SCHOOL.COM](https://www.facebook.com/thebarnnurseryschool)

“A survey by Royal London Insurance revealed that 5.4 million UK residents don’t know how to go about writing a Will.”

We can help!



**Complimentary Consultation
with local advisor based in Earls Colne.**

Services provided include:

Wills, Trusts, Estate Planning, Lasting Powers of Attorney, Inheritance Tax, Protection and Insurance



Contact: John Wilson
Tel: 07931 158440
Email: john@JWW.life
Website: www.JWW.life

TARMEC
&
CROFT
@gatesandfencing

- Bespoke gates,
- Hardwood or Treated softwood
- Made to measure
- Supply only or Supply and Fit
- 01787 224848



Riverside Business Park, Station Road, Earls Colne CO6 2ER



01245 478588

A trustworthy family run business specialising in Gas, Oil, LPG, Electrical, Plumbing, Air-con and Renewables.

Boiler Installs, Servicing & Repairs
New Heating Systems
Plumbing Repairs
Electrical Services
Air-con & Renewables

- ✓ All calls are answered personally
- ✓ Confirmed bookings given
- ✓ No job too small!
- ✓ Work covered by 12-month guarantee



COLNE VALLEY luxury toilets

Beautiful self contained luxury mobile toilet hire for any wedding, party or corporate event

Handmade to a superior finish, white porcelain hand basins, sparkling clean porcelain toilets with wooden seats, chrome fittings, wooden floors, large mirrors, lighting, silk flowers, hot water and music add a touch of class to your special day.

They arrive fully equipped with soft toilet tissue, hand towels, luxury soap, hand cream, automatic air fresheners, and a range of toiletries.



@colnevalleyluxurytoilets



ginny@colnevalleyluxurytoilets.co.uk

www.colnevalleyluxurytoilets.co.uk

Call Ginny today on 01787 220358 or 07792 424061

Where luxury comes as standard



Heritage Museum

EARLS COLNE

September Events

Friday 20th September was one of the proudest moments for the Museum, when we saw the fruition of over 6 months research, coordination and fundraising to unveil a memorial to the fifteen aircrew of two Lancasters who had died exactly 80 years prior following a tragic mid-air collision above farmland between Earls Colne and Great Tey.



Over 150 guests attended the service conducted by Reverend Mark Payne, and the unveiling of the memorial itself, carried out by John De Angelis and Robert Dryland, sons of two of the crews. Over 30 relatives attended from as far away as Cardiff and Penzance, Cornwall, with hundreds of others watching the service online – as far away as New Zealand and Canada. The services were well represented by three Officers from the RAF squadron, the New Zealand Defence Force and the Royal Canadian Air Force. We were also superbly supported by the both the Royal Air Forces Association and the Royal British Legion who kindly provided both standard bearers, and Ingrid Leatherdale – Trumpeter/Bugler. Deputy Lieutenant of Essex, Juliet Townsend represented the King, and we were pleased that Sir Bernard Jenkin, MP for Harwich and North Essex was also able to attend.

The Museum's research has been very rewarding and humbling. In the war time conditions, 80 years ago, the locations of the crashes had been incorrectly passed to relatives, and then due to

Colne
Valley
Groundcare



- Grasscutting • Beds and Borders • Fencing • Hedging
- Hard and Soft Landscaping • Patios • Driveways
- Mini Digger Work • Turfing • Ponds
- General Maintenance

Contact David on 07976 554664 for a competitive quote.

Professional and friendly service guaranteed.

Lower Orchard Cottage, Elms Hall Road, Colne Engaine, Colchester,
Essex CO6 2JL Tel: 01787 220358 Mobile: 07976 554664

david@colnevalleygroundcare.co.uk

Heritage Museum (Cont'd)

EARLS COLNE

the passage time, the on-ground knowledge of them had been lost. Our research provided the exact locations, and then the kind offer by Robert Prestney of Holmwood Farm for us to place the memorial on his farmland at the junction of America Road and Tey Road will ensure that the Memorial provides a superb position.

We then received tremendous assistance and support from both companies and individuals to ensure a fitting memorial could be produced – including an audio bench which allows visitors to listen to the stories of the fifteen crew

We also produced a booklet “Fifteen Remembered” which has been very well received; giving the biographies of all 15 of these young men – aged as young as 21 and none older than 35. It answers the question of why there was an additional aircrew on LM167 Lancaster- a tragic loss of a war hero, F/O Ernest Hooker – who had been personally awarded the Distinguished Flying Medal by King George VI. Through the military records we were able to research each of the aircrew to show the paths of the crew through training that had taken up to two years, to be lost, as many thousands of the Bomber Command were, within a few weeks. Copies are available from



B
A
U
B
L
E
S

B
E
L
L
S

R
I
B
B
O
N
S

C
A
N
D
L
E
S

Christmas Is On the Way

*Make it personal
Shop Local*

*We look forward to seeing you
at
Colne Engaine Christmas Fair
on Sunday 17 November*

*and in the Shop
Tuesday- Saturday
10.00 - 5.00*

Ziel Design
FOR LIVING
27 years of beautiful homes

ST. EVAL



The Old Forge, 39 High Street, Earls Colne CO6 2PA.
01787 22 29 89

Heritage Museum (Cont'd)

EARLS COLNE

the Museum at £5 each or £7.50 including UKP&P.

Although, the Memorial is now complete, our research continues – and indeed, due to the coverage by ITV Anglia, we have now been contacted by further relatives and have been pleased to facilitate family connections.

All the photos, kindly taken by a volunteer team of four photographers at the pub and the service, plus the video of the Unveiling Service are now online at <https://echm.org.uk/lancaster-lm167-ll802-memorial/>

Other Events

Heritage Open Day Event: Earls Colne Heritage Museum at the Quaker Meeting House was a success with two Burrows Road guided tours from John Stedman and with refreshments provided by the Quaker Meeting House.

Heritage Open Day Event: Essex Industrial Archaeology Group Heritage Fair 2024 at the Grange Barn Coggeshall. This was an indoor event and we were one of many exhibitors. Well worth the visit.

Guided Tours

Two John Stedman guided tours took place in late September and early October. If you missed them, they will be repeated at times next year.

The Retreat

Short Stay Self Catering Accommodation

Jean Cooper

01787 473 737

07754 692 778

Email: info@theretreatselfcatering.co.uk

Web: www.theretreatselfcatering.co.uk

Motts Garden, School Road, Little Maplestead, Halstead, Essex, CO9 2RY



Heritage Museum (Cont'd)

EARLS COLNE

Brick Meadows Guided Walk: 28th September. A very pleasant day for a footpath walk. Many thanks to the Brick Meadows maintenance team for keeping the footpaths accessible and providing new benches at various points.

Atlas Works Walk: Sat 5th October. A repeat of the talk earlier this year that we gave to the Farm Machinery Preservation Society.

November/December Events

Earls Colne was nearly the Home of the First Helicopter: Sat 16th November at The Con Club. Tickets £5 from Earls Colne Heritage Museum or email chair@echm.org.uk

Shopping Fair/Village Market: Sat Dec 7th

We are now in the process of arranging a full program of events for 2025.

More information on us and our events can be found through FB and our web site or join our mailing list.

www.echm.org.uk

<https://www.facebook.com/earlscolneheritagemuseum>

Thank you all for your continued support.

JMAC INTERIORS *Specialist Painters & Decorators* *Est. 1997*



- All Interior and Exterior Work Undertaken
- Specialist in Period & Listed Properties
- Wallpaper Hanging to the Highest Standards
- Restoration of Ornate Cornices & Ceiling Roses
- References Available
- Fully Insured

Contact: Jeff Macdonald
Tel: 07778 031505 - 01787 224674
Email: jmacinteriors@aol.com
www.jmac-interiors.co.uk

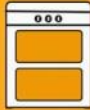




THE OVEN CLEANERS



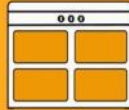
Single
Oven Clean
£55



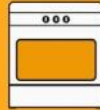
Double
Oven Clean
£65



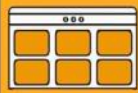
90cm Range
Oven Clean
£90



110cm Range
Oven Clean
£110



Wide Single
Oven Clean
£90



Aga/Noble
Everhot Clean
from £80

EXTRAS BUY 1 GET 1 FREE
FROM ANY OF THE 4 EXTRAS BELOW



Hob Clean
£20



Extractor Clean
£20



Microwave Clean
£20



BBQ Racks
£20

BBQS & AIR FRYERS



Small BBQ
Up to 50cm
£55



Medium BBQ
50-70cm
£65



Large BBQ
70cm
£75



Air Fryer
£55

CONTACT US TO BOOK NOW

☎ 01787 743234

☎ 07834 170338

✉ info@theovencleaners.co.uk

🌐 www.theovencleaners.co.uk



Four Colnes Horticultural Society

The Sun shone on an early September afternoon as nearly 20 society members enjoyed an afternoon visit to Polstead Mill. Tucked away on the banks of the River Box in Suffolk. This brick built mill lends itself to the extensive gardens that have been created by the current owners in a period of less than 25years. A grand greenhouse and walled garden were the envy of many as, on a warm day, was the swimming pool tucked away within its own relaxing area. Hidden away on a very tight country lane and created on differing levels, with the history related by the owner we were privileged to be given an insight into this riverside garden. Freshly baked cakes with tea and coffee rounded off a very enjoyable garden visit.

After a seemingly endless wet spring and summer we have recently been praying for rain in order to prepare for the establishment of the wildflower meadow. As I write, the ground has been harrowed (ruffled up) exposing some soil and a substantial number of wildflower hay bales unrolled. These have been subsequently "teased" across the area courtesy of the Society President Oliver Wass and his machinery. The result of this work should be a release of the assorted seeds held within and, hopefully germination in the Spring. The remaining debris must be cleared off to the side rather than rotting and enriching the soil. Wildflowers are more successful on poor soil as the



H&M INTERIORS
FINE BESPOKE FURNITURE

01787 224129 www.handminteriors.com
Unit One, Colne House Farm, Station Road, Earls Colne, CO6 2LT

Michael J Byles **Plumbing & Heating**

Oil Boiler Installations
Servicing & Maintenance
Oftec Registered

General Plumbing & Heating
work also undertaken.

Telephone : 01206 822 225

Mobile : 07717 012 433

E-mail : michaeljbyles@aol.com

Four Colnes Horticultural Society

competition from vigorous grasses is greatly reduced. Success of the project will be gauged in 2025!

After a great deal of work and research by the secretary it was frustrating for the committee to have to make the decision not to proceed with the visit to Kew at the end of November to see the Christmas lights. Hiring coaches has become very expensive and without the support of members to fill them the society would incur a substantial loss. A visit to Wisley in September had to be cancelled for the same reason. It is for this reason that the society will be focussing on visits to gardens within a reasonable travelling distance in the future and hopefully these will achieve a good level of support from members.

Sorry to mention the C word so early but please put the date of Saturday December 7th in your diary – this is the date of the Christmas Market in the Village Hall an event that needs everyone's support. There will be a variety of stalls, cakes to buy and refreshments courtesy of the WI.

www.fourcolneshorticulturalsociety.com

Secretary, Sarah Adlem, M. 0794 1131164, 110 Colchester Road, White Colne, CO6 2PP
Email: secretary.fchs@outlook.com

BROOKS

**your search is over...
you've found the premier transport and
warehouse solution**

- Same Day, Next Day, Timed, Economy and Bespoke Services
- Fast Turnaround, Competitive Prices and a Friendly, Efficient Service
 - Direct Door to Door, Collection and Delivery
 - Independent Haulier, Not Part of a Hub system
- National Groupage, Part Loads, Full Loads and Specialised Movement
 - Comprehensive Warehousing, Pick and Pack Facilities
 - Racked and free-standing storage
 - State-of-the-art administrative technology

Contact our Sales Team on:

BROOKS TRANSPORT SERVICES LIMITED

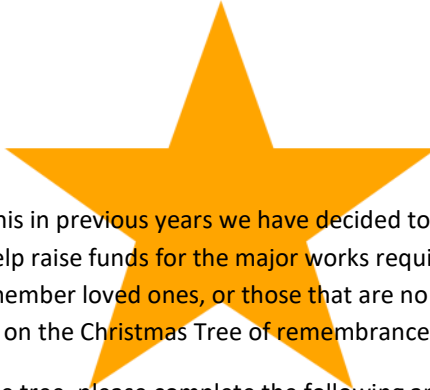
Unit 15 Second Avenue Bluebridge Industrial Estate Halstead Essex CO9 2SU

Tel **01787 476624** Email sales@brooks-transport.co.uk

Web www.brooks-transport.co.uk



Christmas Dedicate A Star



After the popularity of this in previous years we have decided to hold the Dedicate a Star again this year to help raise funds for the major works required on our church. We are asking people to remember loved ones, or those that are no longer with us by donating £5 towards a star on the Christmas Tree of remembrance.

To purchase a star for the tree, please complete the following and send to Rita Prior C/o: 1 Church View, (off Brook Street), Colne Engaine or email ritaprior31@gmail.com:

I would like to purchase _____ stars @ £5 each – Total £_____

Cash or cheques made payable to Colne Engaine PCC

Dedication/s:

Name:	Address:
Email:	
Telephone:	

All stars will be written out and hung on the Christmas tree by the 13th of December.

COLNE ENGAINE FESTIVAL
PRESENTS

Carols on the Green

SAT 14 DEC - TIME TBC

*Treats provided
by F.A.C.E.S*



Join us at St Andrews church to the Village Green, Colne Engaine. Bring your torches and lanterns for the torchlight procession from the church to the village green for carol singing by the Christmas tree.

Joined by CE Primary School choir.

Free entry. Donations welcome. Proceeds to F.A.C.E.S



EST. 1951

**SPECIALISING IN
PROPERTY SALES,
LETTINGS &
MANAGEMENT FOR
OVER 70 YEARS**

**HIGH STREET, EARLS COLNE
COLCHESTER, ESSEX CO6 2RN**

T: 01787 223879

E: EARLSCOLNE@PERCIVALANDCOMPANY.CO.UK

W: WWW.PERCIVALANDCOMPANY.CO.UK

Christmas Starts Here

Friday 29th November

3.30pm - 5.30pm

St Andrew's Earls Colne

**Photo opportunity
for the children
in a 'live' crib
scene**

**Mince
Pies &
Cookies**

**Letter
to Santa
Workshop**

**Christmas
Crafts**

**Light the Star and
bless the Nativity
at 5.15pm**

**Mulled
Wine**

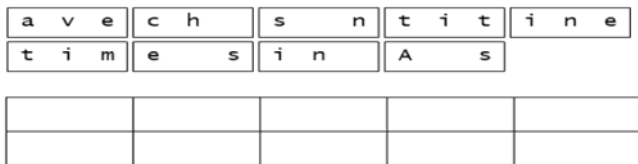
**School
Children's
Nativity
Scenes**



A FREE event for all the family

Puzzles

Letter Tiles Unscramble the tiles to reveal the message. Tiles can be used once only.



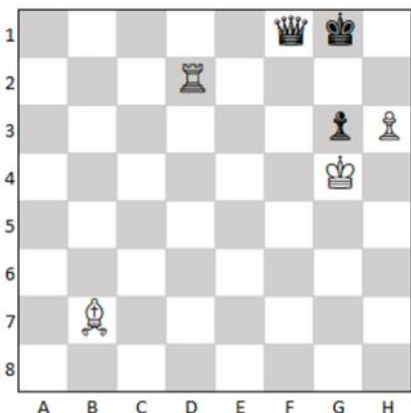
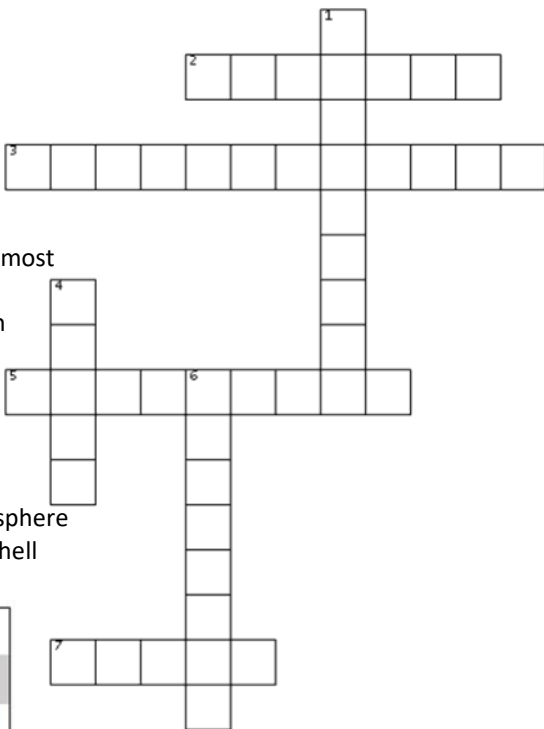
November Crossword

ACROSS

2. American name for jumper
3. Starch is a form of what
5. Which cricket team have won the most County Championships
7. Marshmallow treat invented by an American Girl Scout

DOWN

1. Name for a wide, thick moustache that curves up at the ends
4. A violent disturbance of the atmosphere
6. Iconic aircraft designed by RJ Mitchell



Checkmate in One

White turn to go.

Move:

To:

All answers on page 47

Brick Meadows

EARLS COLNE

September has been a busy month – The monthly work party have continued to keep the paths as clear as they can with some bursts of rain revitalising the brambles and nettles. Also work has started on the annual cutting of the Anthills field. This is a big task and will probably involve the work party over the next few months. We cannot use a tractor and mower here otherwise damage will be caused to the many anthills, instead brush cutters must be used and then the whole area cleared otherwise the cut grass will fertilise the soil.

The lower Ryefields was cut again in August in preparation for the next stage of developing a Wildflower meadow in collaboration with the Four Colnes Horticultural Society. Thirty trailer loads of cuttings were collected and piled to the side of the meadow. Following this the ground was lightly harrowed to expose some soil and at the end of September Oliver Wass delivered 30 bales of wildflower hay from the Woodland Trust estate at Fordham. A group of us unrolled and spread the hay then with more help from Oliver it will be turned to hopefully knock out more seed. The next step in this project will be to collect the “spent” hay as wildflowers thrive more in unfertilised soil. We would be very grateful for help with this and are proposing to have a work party on a Saturday morning in the near future, so watch out for notices on Facebook. Grateful thanks go to Oliver for all his help with this project.

The Long Meadow has now been cut by our usual contractor. There was a large amount

COURTAULD MEMORIAL HALL

1 Station Road, Colne Engaine, CO6 2ES

FOR ALL YOUR SOCIAL NEEDS

Receptions, Discos & Dances, Children's Parties, Auctions & Fundraisers, Exhibitions, Meetings. AMPLE CAR PARKING.

01787 223668

www.courtauldmemorialhall.co.uk



Brick Meadows (Cont'd)

EARLS COLNE

of growth as unfortunately this wasn't done last autumn as it was so wet and being in the bottom of the valley, it is very lush with grass, brambles, nettles and thistles, it also has several springs. Sadly, amongst all the undergrowth too many sweet wrappers, drinks bottles & cans appeared; this, together with dog mess takes the shine off this beautiful, tranquil, green haven. A little care and responsibility goes a long way in helping the trustees and work party preserve this area for all to enjoy.

At the start of October, work is due to start on clearing the old ponds at the end of the Long Meadow to create a wildlife pond, thereby increasing the diversification of the Brick Meadows. An update on this work will appear in future editions of this magazine but, in the meantime please be understanding of the "mess" caused by machinery and the dumping of the dredged material.

Keeping the area wild but managed takes quite a bit of work and the trustees are always looking for volunteers to help. The "Retirees" work party meet for a couple of hours monthly in the morning of the third Thursday – it is a good social group out in the fresh air. If you would like to join the please contact the trustees.

Frances Barton, Jayne Meleschko

A. Birkin & Sons Funeral Directors

*A family concern, concerned for your family
in your time of need.*

Market End, Coggeshall, CO6 1NH

Telephone: (01376) 561316

Email: info@abirkinandsons.com

Recipe Corner



Easy Chicken and Mushroom pie

This is a great way to use the leftovers from a roast, making a yummy, warming dinner for the family.

Fry off the onion until it is soft. Add the mushrooms, cook for a further couple of minutes. Then add the diced chicken and cook for 5 more minutes. Add the Tarragon and salt and pepper. Mix well. Then add the soup, fill the soup can with water, rinse around and pour into pan.

Add the peas and any other vegetables.

Pop the pastry lid on, and pop in the oven for 40 minutes at 180/200 degrees C.

Serve with green beans, chips or potatoes.

Ingredients

Half a roast chicken -diced

One small onion – diced

Olive Oil

Salt & Pepper

1tbspn Tarragon

Couple of handfuls of peas (I prefer petit pois)

Any other leftover cooked root veg

250g mushrooms, sliced

One can of condensed mushroom soup

One pre-made puff pastry sheet

**Lambert
Chapman**
Chartered Accountants

**For all your accounting,
audit & taxation needs**



CALL LUCY ORROW - 01376 326 266

www.lambert-chapman.co.uk

Puzzle Answers

A	s	t	i	t	c	h	i	n	t	i	m
e	s	a	v	e	s	n	i	n	e		

ACROSS

- Sweater
- Carbohydrate
- Yorkshire
- Smore

DOWN

- Handlebar
- Storm
- Spitfire

Checkmate in One

White turn to go.

Move: H3

To: H2

DO YOU NEED A RELIABLE ELECTRICIAN?

Considerate and tidy electrician
with 20+ years' experience
Fully qualified, insured and DBS checked.

Domestic services from new or replacement lights, switches and sockets to fuse board replacements, full rewires and more!

Commercial services including emergency lighting and smart lighting.

External services outbuilding and external power and garden lighting.

Other services earthing upgrades, LED lighting, electric heating install, bathroom and kitchen electrical works, central heating and smart wireless central heating systems.

Fault finding experts

NO JOB TOO SMALL, PLEASE GIVE SIDMAR A CALL!

 **SidmarElectrical^{Ltd}**

Earls Colne, Colchester, Essex.

Tel: 07545 125 376 Email: sidmarelectrical@outlook.com

48 / www.colnechurches.com

Going Walk About



The Last of the Summer Walks were probably the best of the year! In August both our short and long walks were based around the village of Messing, from the lovely Old Crown pub. Then in September we walked around Gestingthorpe from the Pheasant pub. A fantastic village, great walk and another lovely pub.

Much of the start of the Messing Walk was along concreted farm tracks, that reminded me of the routes from our airfield to Marks Hall. A little bit of research showed that was a good guess. These were the remains of the runways and tracks of the Birch/Messing airfield built in the last year of the war. It was a US Army 8th Airforce Bomber Base, but it found little use at that late stage of the war. It was used in Operation Varsity and then decommissioned in late 1945.

The short walk there on the 10th August was 4.8 miles long and after the old airfield tracks the route took us through Layer Wood and then Pods Wood before returning to the village via the church. For the longer walk on the 24th August I added a figure-of-eight loop that took us out to Layer Marney. Passing Layer Marney church, the paths and quiet country lanes then brought us back to the edge of Pods Wood, with the same ending, to what was now a 7.6-mile walk.

Gestingthorpe in September should never have happened, as I had planned a route around Wickham St Paul, only to find that the pub was closed until October! Just a few miles to the north-west, the next pub was the Pheasant at Gestingthorpe, so a quick short route was developed and checked in time for the walk on 14th September. This was a revelation – especially our mid-walk stop at the church (St Mary The Virgin), a beautiful building, like so many of the local village churches we are blessed with, along with its rare double-hammer-beam roof! A village church is where the past and present come together like nowhere else, and later that evening a talk was advertised about ‘Captain Oates’s Mother’. The Oates family lived at Gestingthorpe Hall for a number of years, which included the period when Laurence Oates was with Captain Scott on his fatal expedition to the south pole. We learned a lot from the lovely people of Gestingthorpe. This helped me to plot a longer route that included the sight of their Roman Villa and to pass the new, traditional windmill that is being built nearby. I have seldom seen such well-kept and signposted footpaths in this part of Essex – well done Gestingthorpe! The short walk was 3.7-miles, and the long walk was just on 6.0-miles The talk can be seen here if you are interested: <https://youtu.be/AEP8iH9Vdxw>

We will continue with two walks a month, a short one, of 2 to 4 miles, on the second Saturday of the month and a longer one, of 4 to 8 miles, on the fourth Saturday of the month.

To get more information on the latest walks you’ll need to be on our mailing list or in our WhatsApp group, contact me on 07734 450221 by voice or text, or Email goingwalkabout.colne@gmail.com for more details.

Enjoy your walkabouts, wherever they may take you.



Unlock cash from your home

For homeowners over 55

We're here to help you decide if equity release could improve your retirement finances. By releasing some of the cash from your home you could:



Pay off an existing mortgage



Clear existing credit cards and loans



Gift money to family



Make home and garden improvements

Lifetime Mortgages (also known as Equity Release) are a popular option for homeowners over the age of 55 and have made a genuine, lasting, positive difference to the lives of thousands of people in the UK, giving them the freedom of choice to make their lives easier and more comfortable.

Call us today and let's see how we can help make a difference to your life.

Hoskin Financial Planning

08081 757434

help@hoskinfinancial.co.uk

www.hoskinlaterlifeplanning.co.uk



Equity Release may involve a lifetime mortgage, which is a loan secured against your home, reducing the value of your estate and may affect your entitlement to means tested benefits. You should always think carefully before securing a loan against your home. Unless you decide to go ahead, our service is completely free of charge as our usual advice fee of £695 is only payable on completion of a plan.

Village History

EARLS COLNE



Bricks and Tiles

Have you ever wondered why so few of the old cottages in Earls Colne have thatched roofs? Their absence is explained by a manorial by-law, vigorously enforced by the Earls of Oxford, that all houses in the Manor must have tiled roofs. That might seem a sensible precaution against the risk of fires, but probably had more to do with the fact that the Tile Kiln in Coggeshall Road was manorial property and needed to make a profit. Thomas Man, who had a cottage on Colneford Hill, was fined by the Manor Court in 1582 because, in trying to repair his roof with thatch:

“He hath pulled down the tiles and covered the same with straw”.

The Coggeshall Road kiln may have been in operation since Roman times and there was another tile kiln on the outskirts of Coggeshall, giving the derivation of Tilkey Road. In the early years of the twentieth century our local builder Zach Rogers, who, in partnership with the carpenter Philip Wash, constructed most of the houses required for employees of the Atlas Works, was still making his own bricks and tiles from a kiln in Tey Road. As his own house and workshop were on The Green close to the new De Vere Grove estate, it is appropriate that the entrance road to the estate should be named in his memory. **David Brown**



ELECTRICAL LTD

Fully qualified JIB Gold Card Electrician covering Bures and surrounding areas.

HARRY Tel: 07861 764861

Email: info@22electrical.com

Website: www.22electrical.com

Facebook: 22 Electrical Ltd

Instagram: 22electricalltd

Parish Council



Members of the villages' Parish Councils work hard to ensure that the Three Colnes remains a beautiful and tranquil place to live. If you have any comments or suggestions, please feel free to contact them.

COLNE ENGAINE Download Parish Council Notes: www.colne-engaine.org.uk/meetings

CLLR ALAN BARNARD

(Chairman) alan@colne-engaine.org.uk
EALC representative; Townlands Trust;
Burches meadow liaison; Sexton's Field
Trustee; funding for village projects,
defibrillator warden

CLLR TERRY FLOYD

terry@colne-engaine.org.uk
Tree warden; footpaths; Townlands Trust;
Sexton's Field Trustee

HELEN BISCOE-DAVIS

helen@colne-engaine.org.uk
Community engagement

GRAHAME WALKINGSHAW - 01206 240772

Parish Clerk & Financial Officer
clerk@colne-engaine.org.uk

CLLR SARAH DIGNASSE

(Vice Chair) sarah@colne-engaine.org.uk
Recreation ground; village school; village
hall liaison

CLLR NIGEL WARWICK

nigel@colne-engaine.org.uk
Finance committee; Burches Meadow
liaison; festival liaison

CLLR IAN MESSENGER

ian@colne-engaine.org.uk
Finance committee; funding for village
projects; website; I.T.; and archive liaison

CLLR PAT TAYLOR

pat@colne-engaine.org.uk
EALC representative; tree warden

WHITE COLNE www.whitecolneparishcouncil.gov.uk

Cllr. JANE TAYLOR— 07521 312778

chair@whitecolneparishcouncil.gov.uk
(Chairman) BALC executive; climate action,
community energy ,community liaison, grant
funding, village hall – managing and estate.

Cllr. JAMES BOND is Vice chair .

[Cllr.jbond@whitecolneparishcouncil.gov.uk](mailto:jbond@whitecolneparishcouncil.gov.uk)
Highways, village green, village hall estate.

Cllr. PAUL BATCHFORD

Cllr.pbatchford@whitecolneparishcouncil.gov.uk
Environment (includes footpaths) meadows,
river (includes flooding).

Cllr. DENISE DRIZEN

Cllr.ddrizen@whitecolneparishcouncil.gov.uk
Allotments, defibrillator, village hall estate.

Cllr. KRIS BELL

Cllr.kbell@whitecolneparishcouncil.gov.uk
Defibrillator, web site and I.T, village hall
estate.

Cllr. JOHN BRACE

Cllr.jbrace@whitecolneparishcouncil.gov.uk
Highways, planning, policies, community
garden.

Cllr. JOHN WILSON

Cllr.jwilson@whitecolneparishcouncil.gov.uk
Allotments, environment, planning, policies,
river.

JIM MORRIS is Parish Clerk and financial
officer

clerk@whitecolneparishcouncil.gov.uk



EARLS COLNE

All Members are jointly responsible for Village Environment and Planning

NIKKI SPELLING is the Chair and responsible for Council Strategy

nicola.spelling@earlscolne-pc.gov.uk

TONY CALTON is responsible for Neighbourhood Plan and Planning

tony.calton@earlscolne-pc.gov.uk

JONATHAN HAPPS is responsible for Grant Support

jonathan.happs@earlscolne-pc.gov.uk

JUNE JEMMETT is responsible for Finance

june.jemmett@earlscolne-pc.gov.uk

LORRAINE BAUCKHAM-LEYS is responsible for Compliance and Engagement

lorraine.bauckham-leys@earlscolne-pc.gov.uk

DEE ELLISON – is the Parish Clerk

clerk@earlscolne-pc.gov.uk

JUDE HENRY: Parish Clerk Assistant

village.hall@earlscolne-pc.gov.uk

TERRY BENNETT is the Village Hall Caretaker

village.hall@earlscolne-pc.gov.uk

EARLS COLNE VILLAGE COMMUNITY TEAM

Vern Smith; Dean Cudmore; Paul Southgate and Dave Newbery are responsible for High Street bins, litter picking, strimming and grass cutting, Village Hall maintenance.

There are currently FIVE Councillor vacancies, please contact the Parish Clerk for further information

To contact your Councillors in Earls Colne, visit their website: <https://www.earlscolne-pc.gov.uk/> and click on the Parish Council tab and select councillors. Earls Colne Parish Council Telephone: 01787 224370.

Earls Colne Parish Council Meeting

Third Wednesday of every month (a notice will be provided in advance on all Village Noticeboards). Meetings commence at 7pm at Earls Colne Village Hall – Council Chambers

Members of the public are welcome to attend. However, due to limited capacity within the Council Chamber, and to ensure compliance with fire regulations members of the public are requested to register their intention to attend by contacting the Parish Clerk, in person, email or telephone.

ESSEX COUNTY COUNCILLORS

County Councillor Chris Siddall

cllr.chris.siddall@essex.gov.uk

District Councillor Gabrielle Spray

cllr.gspray@braintree.gov.uk

District Councillor George Courtauld

cllr.gcourtauld@braintree.gov.uk

MP for Witham The Rt. Hon Priti Patel

withammp@parliament.uk



Harvest Festival Shopping List 2024

Food items: Coffee, Cereal (small box), UHT Milk or milk alternative, Tinned Hot Snack (Ravioli, Macaroni Cheese etc.), Tinned Hot Meat (Stews, curry etc.), Tinned vegetables; Packet of instant mash, Tinned rice pudding, packet instant custard.

Non food items: Shampoo; Toothpaste, Toothbrushes, Shower gel, Bar of soap, Deodorant; Size 5 and 6 nappies.

We ask for small packs as larger packs do not fit in our boxes making it difficult for our clients to carry home. Also, we are unable (for hygiene reasons) to split large size or catering packs.

We follow the standards set by the Food Standards Agency. We can only accept donations of unopened and undamaged goods well within their "Use By" date (no less than six months if possible). Items that do not meet these requirements cannot be used and your donation may be wasted.

Contact us: Telephone 01376 330694 Email: info@braintreearea.foodbank.org.uk

PEARTREE BED & BREAKFAST

Jill & Chris warmly welcome you to their 17th Century cottage in Colne Engine.



2 double bedrooms plus cosy sitting room and private facilities.

English or Continental breakfast. Countryside views and walks.

Also available Shepherds Hut style accommodation, double occupancy with en-suite.

T: 01787 223348

M: 07919 200646

E: info@peartreebedandbreakfast.co.uk

www.peartreebedandbreakfast.co.uk

EARLS COLNE TAXIS

01787 474666

FAMILY RUN BUSINESS SINCE 1998

TAXI & PRIVATE HIRE VEHICLES

4 & 6 SEATER AVAILABLE

LOCAL & LONG DISTANCE

AIRPORTS; STATIONS; HOSPITALS

MOST MAJOR CARDS ACCEPTED

Web: www.earlscolnetaxis.co.uk

About this bus service

Demand Responsive Transport (DaRT) is an alternative way of providing access to key services in rural areas.

Instead of using fixed routes with fixed stops and times, DaRT customers book journeys with the operator in advance and are picked up from an agreed point – often their own home, a bus stop or local place of interest. You can use it:

- to go shopping
- attend a health appointment
- get to/from work, school or college
- visit friends

Arrow Taxis Essex Ltd will also need to know:

- Your name
- Your telephone number
- Any specific requirements, such as if you are a wheelchair user or if you have difficulty walking

Return journey

It is advisable to book your return journey at the same time of your initial booking otherwise you will need to give 2 hours' notice for your return journey.

Remember to be ready when you are due to be collected.

This service is funded by Essex County Council and operated by Arrow Taxis.



**Essex and Suffolk
DaRT**
01621 874411



When does it operate?

DaRT 3 operates between 0600 and 2000, Monday to Saturday. Unlike a bus service there is no set route and timetable.



How do I book a journey?

Telephone Essex and Suffolk DaRT on 01621 874411 and explain:

- Where you would like to go
- Where you would like to be collected from
- What time you need to go (please give at least 2 hours notice before travelling)



How much will it cost?

Distance	Adult (age 16 or over)		Child (age 5 to age 15 inclusive)	
	Single	Return	Single	Return
Less than 2 miles	£2.50	£3.50	£1.50	£2.00
Between 2 and 5 miles	£4.50	£6.50	£2.50	£3.50
More than 5 miles	£5.50	£8.00	£3.00	£4.50

**Concessionary pass holders – valid after 0900
Monday to Friday and all day Saturday**



How can I pay?

You can pay on the bus or by debit/credit card over the telephone.

DaRT 3 covers the parishes of:

Alphamstone	Ashen	Belchamp Otten	Belchamp St. Paul	Belchamp Walter
Birdbrook	Borley	Bulmer	Bures Hamlet	Colne Engaine
Earls Colne	Foxearth	Great Henny	Great Yeldham	Greenstead Green
Halstead Town	Lamarsh	Liston	Little Henny	Little Yeldham
Middleton	Ovington	Pebmarsh	Pentlow	Ridgewell
Stambourne	Steeple Bumpstead		Tilbury Juxta Clare	Toppesfield
Twinstead	Wickham St. Paul	White Colne		

The Three Colnes Diary

000000

25

COLNE ENGAINE

WHITE COLNE

1	Fri		Village hall Bridge Club 1.30pm
2	Sat		Village hall. Private booking
3	Sun		
4	Mon	Village Hall - 7pm Zumba	Village Hall. WINTER HUB 9am
5	Tue	Village Hall - 8pm Yoga	Village hall. Yoga 9.30am
6	Wed	Village Hall - 7.30pm Drama	Village hall. Pilates 6.45pm
7	Thu	Brew n' Chat 2pm (p.13); Village Hall - 7.45pm Keep Fit	Village hall. Sewing Bee 7.30pm
8	Fri		Village hall. Stationmasters Community Café 9am-12.30pm; Bridge Club 1.30pm
9	Sat		
10	Sun		
11	Mon	Village Hall - 7pm Zumba	Village hall. WINTER HUB 9am
12	Tue	Village Hall - 8pm Yoga	Village hall. Yoga 9.30am
13	Wed	Village Hall - 7.30pm Drama	Village hall. Baby massage 1.30pm; Pilates 6.45pm
14	Thu	Village Hall - 7.45pm Keep Fit	Village hall. Sewing Bee 7.30pm
15	Fri		Village hall. Bridge Club 1.30pm
16	Sat		Village hall. SHOWCASE DAY 10am—Free entry and free refreshments, all things climate!
17	Sun	Village Hall—Christmas Shopping Event 11am	
18	Mon	Village Hall - 7pm Zumba	Village hall. WINTER HUB 9am
19	Tue	Village Hall - 8pm Yoga	Village hall. Yoga 9.30am; Parish Council Meeting 7.30pm Open to the public.
20	Wed	Village Hall - 7.30pm Drama	Village hall. Baby massage 1.30pm; Pilates 6.45pm
21	Thu	Village Hall - 7.45pm Keep Fit	Village hall. Sewing Bee 7.30pm
22	Fri		Village hall. Stationmasters Community Café 9am-12.30pm; Bridge Club 1.15pm
23	Sat		
24	Sun		
25	Mon	Village Hall - 7pm Zumba	Village hall. WINTER HUB 9am
26	Tue	Village Hall - 8pm Yoga	
27	Wed	Village Hall - 7.30pm Drama	Village hall. Baby massage 1.30pm; Pilates 6.45pm
28	Thu	Village Hall - 7.45pm Keep Fit	Village hall. Sewing bee 7.30pm
29	Fri		Village hall. Bridge Club 1.30pm
30	Sat		

EARLS COLNE

1	Fri	Beavers 5pm; Cubs 6.15pm; Scouts 8pm; Village Hall - 9.30am Yoga; 1pm Tai-Chi; Youth Club
2	Sat	
3	Sun	Village Hall 10am Jesus Loves You
4	Mon	Village Hall - 12.30pm 60's Pilates; 6pm Karate; 6.30pm Tai-Chi; 7.30pm Zumba
5	Tue	Village Hall - 10am Pilates; 10am Lunch Club; 5.45pm Children's Dance; 7pm Adult Dance; 7pm Upholstery
6	Wed	Brew n' Chat 2pm (p.13); Village Hall - 9.30am Move Me; 11.30am Seated Exercise; 4.30pm Colchester School of Dance; 7pm Yoga; 7pm Pilates
7	Thu	Village Hall - 10am Pilates; 1pm Yoga; 4.45pm Colchester School of Dance; 7.30pm Stane Street Players Drama Group
8	Fri	Beavers 5pm; Cubs 6.15pm; Scouts 8pm; Village Hall - 9.30am Yoga; 1pm Tai-Chi; Youth Club
9	Sat	
10	Sun	Village Hall 10am Jesus Loves You
11	Mon	Village Hall - 12.30pm 60's Pilates; 6pm Karate; 6.30pm Tai-Chi; 7.30pm Zumba
12	Tue	St. Andrew's Book Club Meeting: 2pm at 8 Coggeshall Road, Earls Colne (p.28); Village Hall - 10am
13	Wed	Brew n' Chat 2pm (p.13); Village Hall - 9.30am Move Me; 11.30am Seated Exercise; 4.30pm Colchester School of Dance; 6.45pm Film Club (p.28); 7pm Yoga; 7pm Pilates
14	Thu	Village Hall - 10am Pilates; 1pm Yoga; 4.45pm Colchester School of Dance; 7.30pm Stane Street Players Drama Group
15	Fri	Beavers 5pm; Cubs 6.15pm; Scouts 8pm; Village Hall - 9.30am Yoga; 1pm Tai-Chi; Youth Club
16	Sat	
17	Sun	Village Hall 10am Jesus Loves You; Last day for dropping off Shoe Boxes to St. Andrew's Church
18	Mon	Village Hall - 12.30pm 60's Pilates; 6pm Karate; 6.30pm Tai-Chi; 7.30pm Zumba
19	Tue	Village Hall - 10am Pilates; 10am Lunch Club; 5.45pm Children's Dance; 7pm Adult Dance; 7pm Upholstery
20	Wed	Brew n' Chat 2pm (p.13); Village Hall - 9.30am Move Me; 11.30am Seated Exercise; 4.30pm Colchester School of Dance; 7pm Yoga; 7pm Pilates
21	Thu	Village Hall - 10am Pilates; 1pm Yoga; 4.45pm Colchester School of Dance; 7.30pm Stane Street Players Drama Group
22	Fri	Beavers 5pm; Cubs 6.15pm; Scouts 8pm; Village Hall - 9.30am Yoga; 1pm Tai-Chi; Youth Club
23	Sat	
24	Sun	
25	Mon	Village Hall - 12.30pm 60's Pilates; 6pm Karate; 6.30pm Tai-Chi; 7.30pm Zumba
26	Tue	Village Hall - 10am Pilates; 10am Lunch Club; 5.45pm Children's Dance; 7pm Adult Dance; 7pm Upholstery
27	Wed	Brew n' Chat 2pm (p.13); Village Hall - 9.30am Move Me; 11.30am Seated Exercise; 4.30pm Colchester School of Dance; 7pm Yoga; 7pm Pilates
28	Thu	
29	Fri	St. Andrews Church, Christmas Starts Here 3.30pm (p. 43)
30	Sat	

Useful Numbers

Councils

Braintree District Council 01376 552525
Colchester Borough Council 01206 282222

Doctors

The Elizabeth Courtauld Surgery, Halstead
01787 475944
The Pump House Surgery, Earls Colne
01787 222022

Schools

Colne Engaine C of E (Aided) Primary School
01787 222717
Earls Colne Primary School & Nursery
01787 222205
Honywood Community Science School,
Coggeshall 01376 561231
The Ramsey Academy 01787 472481

Essex Police

Braintree Police Station 0300 333 4444

Village Amenities

Colne Engaine Village Hall 01787 223668
Earls Colne Village Hall 01787 224370
White Colne Village Hall 07585 558047
Colne Engaine Village Shop and Post Office:
01787 220163
White Colne Village Market 07870 652321

Village Groups

Colne Engaine Village Archive 01787 222080

Youth Groups

1st Earls Colne Brownies 01787 224175
1st Earls Colne Girl Guides 01787 220065
1st Earls Colne Rainbows 01787 224913
Scouts www.scouts.org.uk
1stearlscolnescoutgroup@gmail.com

If you are an officer of a club or group in one of the Three Colne Villages and would like to place information about the group's activities and events in the magazine for free, please contact the Editor (pg. 2).

Advertisers Index

Accountants	47
Bed & Breakfast	54
Building Company	28
Computer Services	29
Courtauld Hall	45
Double Glazing	14, 24
Drainage	21
Eco Refill Store	11
Electrician	16, 48, 51
Estate / Letting Agent	2, 42, 59
Fencing & Gates	31
Financial Planning	30, 50
Fireplaces & Woodstoves	10
Forestry Contractor	22
Funeral Directors	46, 60
Garden Services	33
Handyperson Services	25
Interior Design	34, 38
Lawn Care Specialist	15
Luxury Mobile Toilet Hire	32
Mobile Phone Repairs	29
Nursery School	30
Oven Cleaning	37
Painting and Decorating	36
Physiotherapy	9
Plumbing / Heating	25, 32, 38
Printing Company	23
Quaker Meeting House Hire	22
Roofing	20
Self Catering Accommodation	35
Swimming Pool Private Hire	9
Tablet Repairs	29
Taxi & Private Hire Vehicles	54
Transport Company	39
Tree Surgeon	12



HERITAGE

Free Market Appraisals

Sales & Letting Agent
54 High Street
Earls Colne
CO6 2PB
01787 722000

www.essexheritage.co.uk





Daniel Robinson & Sons

your local

Independent Family Funeral Directors

Est. 1892

Friendly, helpful & professional service
at your time of need

Prepaid funeral planning or
free recording of your Funeral Wishes

Chauffeur driven funeral fleet

Excellent facilities in the very
heart of the community

31 High Street - HALSTEAD - CO9 2AA

01787 475533

www.drobinson.co.uk

