



WHITE COLNE PARISH COUNCIL

White Colne Village Hall, Bures Road, White Colne, CO6 2QA.

www.whitecolneparishcouncil.gov.uk

clerk@whitecolneparishcouncil.gov.uk

Village of the Year 2025

31st January 2026

To: All White Colne Parish Councillors

You are hereby summoned to attend an **Extra-Ordinary Meeting** of **WHITE COLNE PARISH COUNCIL** to be held at **White Colne Village Hall** on **Thursday 5th February 2026** at **1930hrs** for the purpose of transacting the following business. Members of the public and press have a right and are cordially invited to be present at the meeting. There will be an opportunity to address the Council under Agenda item 3.

Jim Morris, Clerk to the Council

AGENDA

1. **APOLOGIES FOR ABSENCE**
To RECEIVE any apologies for absence.
2. **DISCLOSURES OF INTERESTS**
To RECEIVE any disclosure by members of interests in Agenda items.
3. **PUBLIC SESSION**
To RECEIVE questions and statements from members of the public.¹
4. **REPRESENTATIVES' REPORTS**
 - i. Cllr George Courtauld & Cllr Gabrielle Spray, Braintree District - Colnes Ward.
 - ii. Cllr Chris Siddall, Essex County - Halstead Division.
5. **COMMUNITY LIAISON**
To RECEIVE and CONSIDER items relating to liaison with the local community & outside bodies:
 - i. *Earls Colne Gas Mains Replacement* (Appendix C).
 - ii. *Update: 30 January 2026* (Appendix D).
 - iii. Meeting with Cadent and Traffic Management at White Colne 'Pop-Up' Gazebo (Appendix E).
 - iv. Correspondence: *Gas Mains Replacement* (Appendix F).
 - v. To receive and consider any further information regarding road closures.
6. **PLANNING**
To RECEIVE and CONSIDER Planning Applications, Appeals or Consultations notified by Braintree District Council, Essex County Council, or any other relevant body, including any received between the date of the Agenda and the meeting.
 - i. **Planning Applications:** None received.
 - ii. **Planning Decisions:** None received.
 - iii. **Planning Appeals:** None received.
7. **DATE OF THE NEXT MEETING**
To NOTE the date of the next meeting: Tuesday 17th March 2026.

¹ White Colne Parish Council Standing Order 3f: *The period of time designated for public participation at a meeting in accordance with standing order 3(e) shall not exceed fifteen minutes unless directed by the chair of the meeting.*

Earls Colne Gas Mains Replacement

Upgrading the ageing gas pipes

Cadent manages the local network of underground pipes that carry gas to homes, schools, hospitals, offices, and other buildings, where it is used for heating, hot water and cooking.

- Modernising gas pipes that have been in operation for over a century
- Upgrade will future-proof the network
- Works began on Monday 26 January 2026 and run until the end of April 2026

Cadent is replacing approximately 1000m of gas pipes along Church Hill, Park Lane, Upper Holt Street, Colneford Hill, and Colne Park Road. The planned activity will involve the decommissioning of the current metallic gas pipes and installing tough new pipes which will last for decades, future-proofing the local network.

Amber Greensmith, Head of Customer Experience at Cadent, said: We have a responsibility to make sure every property that uses gas has access to it 24/7, 365 days a year and these essential works will ensure we keep that promise here in the East of England.

We are very conscious of the disruption roadworks cause and hope people understand this is necessary and essential work, to ensure everyone's safety and maintain a reliable gas supply for your central heating systems.

We work closely with the council and local Highways Authority to find the best possible diversion, but we must ensure that any route is suitable for all traffic. Sometimes this means that the diversion can appear longer, but that is to ensure traffic continues to flow without causing any further disruption.

I thank everybody for their patience as we take the measures needed to ensure our engineers can carry out these works as safely, and as swiftly, as possible.

Gas stays ON for the duration of work. The only interruption to supply will be to properties that take a direct feed from the pipes being replaced (in the immediate local area). Supply to these properties will be disconnected for a short while (it will be back on the same day it goes off), as the property gets connected into the new pipe. Advance notice will be given, and more information will be provided to these properties.

If you smell gas, always ring the National Gas Emergency Service immediately on 0800 111 999*, day or night. Do not assume it is related to this work; it may not be and needs to be checked.

Project Summary

Phase One - Church Hill from junction with Park Lane to junction with Coggeshall Road

Start date: 26 January 2026

Duration: Approximately two weeks

Details of work: Road closure in place with traffic lights on Coggeshall Road/ Upper Holt St

Phase Two and Three - Coggeshall Road to junction with tennis courts

Start date: 16 February 2026

Duration: Approximately two to three weeks

Details of work: Road closure (on Upper Holt Street)

Phases Four to Six – Lower Holt Street from junction with Upper Holt Street to junction with Colneford Park / Colneford Hill

Start date: 2 March 2026

Duration: Approximately three to four weeks

Phase Seven – Colneford Park Road to junction with Colchester Road

Start date: 9 March 2026

Duration: Approximately two weeks

*Please note that dates and duration are subject to change.

Update: 30 January 2026

It has been a busy first week of work in Earls Colne, and we appreciate everyone's patience as our engineers carry out this essential work. The team will continue working over the weekend as we look to make good progress on phase one of the project.

We also wanted to say a big thank you to all the residents (and four-legged friends) who stopped by at the gazebo event today to learn more about the scheme and how it all works. The customer team thoroughly enjoyed speaking with so many people, listening to any concerns, and answering your questions.

If you were unable to attend today's event, we want to remind you that there is an online meeting planned for 5:30pm on Wednesday 4 February.

To join the meeting please

visit <https://teams.microsoft.com/meet/36561389257495?p=XqzgYWzI2IW9zJnSRe>

Meeting ID: 365 613 892 574 95

Passcode: sw3P23Ue

We look forward to seeing many of you on the call on Wednesday and will continue to provide updates on this webpage when they are available.

Meeting with Cadent and Traffic Management at White Colne 'Pop-Up' Gazebo

30th January 2026

Cadent set up an open public information session White Colne staffed by:-

Will Harvey, Traffic Management Contract Manager

Lydia Caroline, Cadent Customer Services Lead

Gary Tidman, Project Manager Costain/Cadent

Kelsy Mills, Cadent Customer Services

Site Works Manager Cadent

A total of eight members of the public visited the 'pop-up' whilst I was there all expressing concern as to lack of access to Earls Colne, access to private property, and access to parking and effect on local business. No one raised the issue of buses or school transport whilst I was there.

I spoke to the Site Manager who was somewhat guarded in his response and relied heavily on the fact that this was planned work that they had been instructed must be done. The question regarding allowing buses through was countered with the fact that it was dangerous to pedestrians and a near miss had been recorded on one of the days when buses had been allowed through. His main interest appeared to be getting this upgrade of the gas distribution pipes completed as quickly and safely as possible. On the positive side he did mention the possibility of weekend working to achieve this.

On speaking to the Traffic Contract Manager it was clear that the Diversions were down to Highways. Since the road is an A road (A1124) then all official diversions must also be on same grade roads i.e. roads. The diversion approved by Highways is A1124 to A12 to A120 to A131i i.e. Earls Colne to Stanway to Marks Tey to Braintree to Halstead. This is clearly shown on the plan TMO/40265 . There is no official diversion up Coggeshall Road let alone any of the small country lanes like Curds Road, Mill Road or Colne Park Road. I obtained a copy of this plan.

The current working plan is to run 'rolling road closures' through Upper and Lower Holt Street, Colneford Hill and Colne Park Road. At the moment these are programmed as closures with controlled access to residents only, they are not planned as through routes traffic light controlled or otherwise. At the moment this work is scheduled to finish by 13th April. To the best of my recollection the main in Colchester Road was replaced sometime during 2010 to 2013. This means that White Colne will be without public transport during this period if buses are not allowed through the planned works. I think this is something we should take up with Councillor Siddall even though it is too late to change the approved plans he should be made aware of consequences of such actions.

We are now in a position where the continuation of a bus service during the period of the gasworks and road closure is uncertain. If the gas main is at the side of the road then controlled access to limited vehicles e.g. buses may be possible but at the moment unlikely. So yes we are effectively isolated unless we have access to our own transport. Konnect and Flagfinders (The School Bus) and seem to play it day by day according to what they are told

by Connect and the Traffic Management Company. They both put the changes to their timetable on line together with any updates which is OK for those of us who use them but we know this is not the case for everyone. Coming back from the meeting I met a lady at the Kings Head bus stop who was unsure of when or if the next bus to Colchester was coming. Perhaps as a local council we should be more proactive and do our best to mitigate the problems that are going to occur if the road is closed with no through traffic allowed once the work starts at Upper Holt Street. These are my ideas but I am sure that my fellow councillors have suggestions.

- Write / email Essex County Council with regard to Demand Responsive Transport (DaRT) which is not available to the areas of White Colne served by the 88 Bus route. State that during the period the Roadworks are in operation White Colne is not served by the 88 Bus route and can this rule be relaxed for the whole of the village.
- Write/email Konnect and ask them to advise us what alternative route they have planned for the 88, 88B and 82 routes should the road be closed at Upper Holt Street, Lower Holt Street or Colneford Hill with no through access allowed for buses.
- Write to / email Flagfinders with the same query

Once we have this information we know what obstacles we face I expect the Bus Companies will state the alternative route will be via Great Tey, A120 and then Coggeshall Road and Essex Dart will take too long to come to a decision. If I am proved wrong then we need to let people know bearing in mind they all do not use the internet.

- My idea is that we produce a laminated information sheet changes to bus routes etc to be placed in each of the Notice Boards and both of the bus shelters. (Do we possess a laminator?) This would need to be updated fairly routinely and need volunteers.
- Do we know of people who routinely drive to Colchester and would be prepared to offer a lift? Can we include this as a question on the laminated sheet?
- Do we know of who routinely rely on the 88 bus to get to Colchester? Perhaps we should include this as a question on the laminated sheet?
- Can we link those who need lifts with those who can give lifts or does this open us to liability in event of accidents, criminal activity, how would the individuals be vetted?

We only have a couple of weeks before the road closures occur is an emergency meeting needed to discuss this matter or can it be done by e-mail between us?

Cllr John Wilson

Service road from Upper Holt
Street to B1024 to be coned off

A1124 CLOSED
Between Earls Colne
and White Colne.
Through Traffic And
Access to Earls
Colne Use A120,
A131 And A12.

A1124 CLOSED
Between Earls Colne
and White Colne.
Through Traffic And
Access to Earls Colne
Use A120 And A131

VMS

VMS



and Vice Versa

A131,
A120,
A12,

Main Diversion Route;

Date	23.04.25	Date	17.09.25
Drawn by	J.W	Revised by	J.W
Revision number	02	Drawn/Revised	

Key
- Sign Diagram
- Advances Location
- Road Closure Location
- Access Only
- 12AB Install Signs

Planner: Jasmine Woods
Email: jasmine.woods@tmohighways.co.uk

Drawing Details:
TM Type: Road closure
Location: CHURCH HILL,
EARLS COLNE,
CO6 2RG

Customer Ref: EAGA245069
Agent: Neil Morbey



Customer Details:

Building 1, Roy Humphrey Site
A140, Eye, Suffolk, IP23 8AW
Tel: 01379 676462



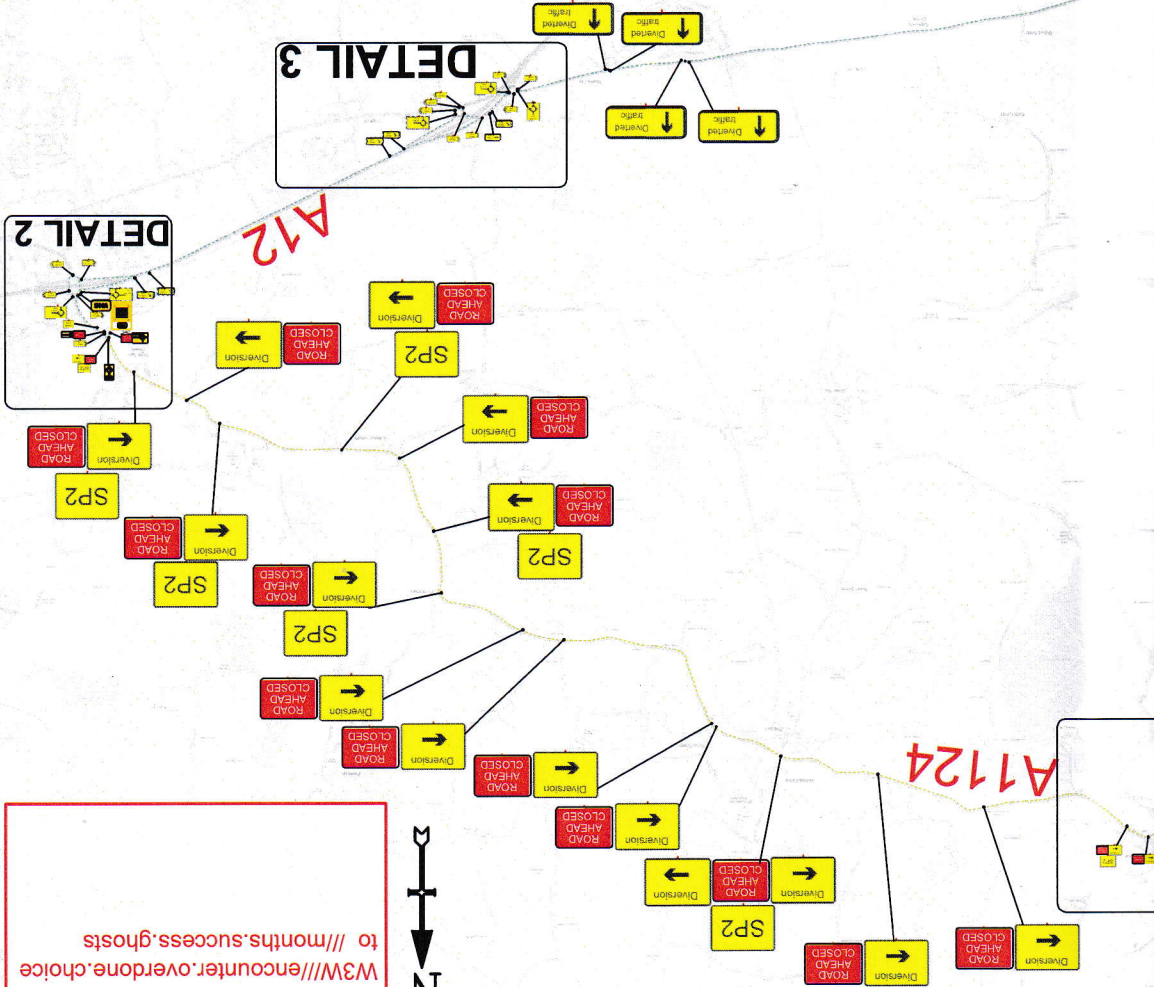
TMO-PL-009rev21 Review due - 01/12/25

Closure details:
Church Hill closed south of the
junction with Park Lane, closed
for 180m south.
W3W///encounter.overdone.choice
to ///months.success.ghosts



GOOGLE	Y
DRIVEN	Y

RED IPV REQUIRED



TMO/40265
PHASE 2
OVERVIEW

2W LIGHTS REQUIRE

DETAIL 4

SP1

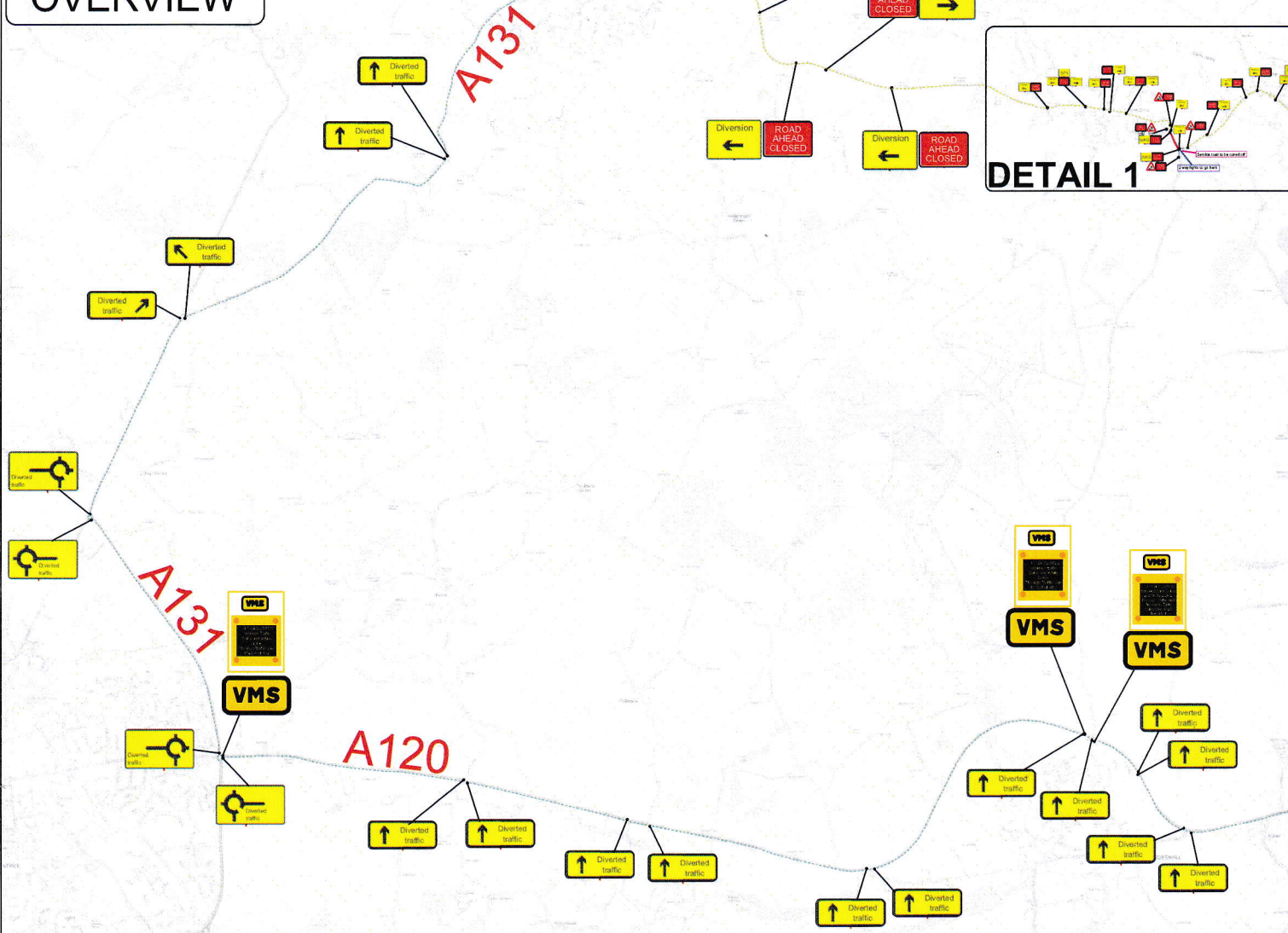
ROAD AHEAD CLOSED

ROAD AHEAD CLOSED

ROAD AHEAD CLOSED

ROAD AHEAD CLOSED

DETAIL 1



SP1 x 4 1050

**A1124 CLOSED
At Earls Colne
Access As Far As
Earls Colne village only
Through Traffic
Follow Diversion**

SP2 x 7 1050

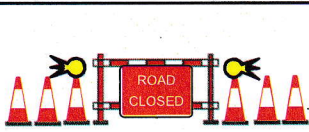
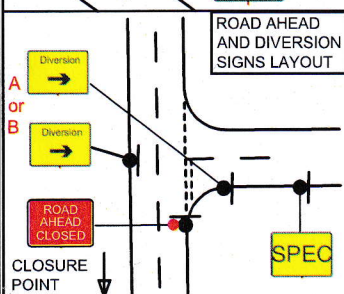
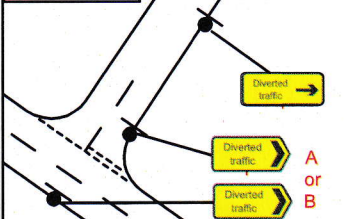
**A1124 CLOSED
At Earls Colne
Access As Far As
White Colne village only
Through Traffic
Follow Diversion**

VMS

A1124 CLOSED
between Earls
Colne and White
Colne.
Through Traffic Use
A120 And A12

DIVERTED TRAFFIC AND ROAD
AHEAD CLOSED LAYOUT

CHEVRON TO BE PLACED
AT POINT OF TURN, IN
POSITION A OR B. DIVERTED
TRAFFIC TO BE PLACED
APPROX 30M BACK



CLOSURE SIGNS TO BE PLACED WITH
PED BARRIER BEHIND THE SIGN
WITH 3 CONES EITHER SIDE AND
A LAMP ON THE INNER 2



ANY SIGNS THAT ARE PLACED ON THE
FOOTPATH MUST BE PLACED LEAVING A
MINIMUM OF 1 METER CLEARANCE FOR
PASSING PEDESTRIANS

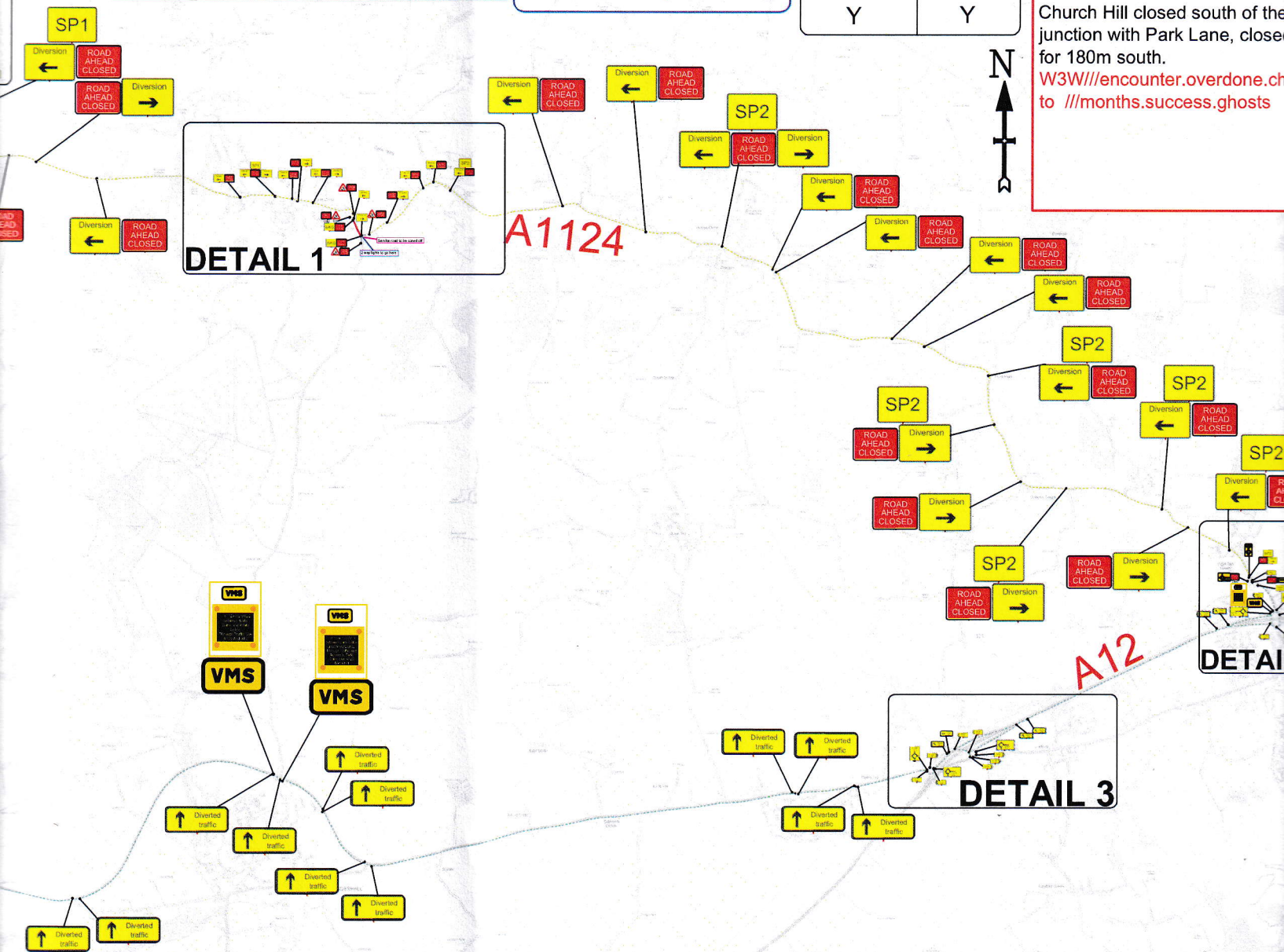
2W LIGHTS REQUIRED

IPV REQUIRED

SURVEYED	GOOGLE DRIVEN
Y	Y

Closure details:

Church Hill closed south of the junction with Park Lane, closed for 180m south.
W3W///encounter.overdone.ch
to ///months.success.ghosts



1050

1050
CLOSED Colne
Far As
illage only
Traffic
version

1050

1050
CLOSED Colne
Far As
illage only
Traffic
version

VMS

A1124 CLOSED between Earls Colne and White Colne. Through Traffic Use A120 And A12

VMS

A1124 CLOSED between Earls Colne and White Colne. Through Traffic And Access to Earls Colne Use A120 And A131

VMS

A1124 CLOSED between Earls Colne and White Colne. Through Traffic And Access to Earls Colne Use A120, A131 And A12

Service road from Upper Hol Street to B1024 to be coned

Gas Mains Replacement

30.01.2026 18:09

Good evening,

I met Cllr Wilson this morning at the Cadent gazebo event in White Colne and promised that I'd send over the link to the dedicated webpage for the works.

You can find all the information at [Earls Colne Gas Mains Replacement - Cadent Gas Ltd](#) and we'll be adding updates as they come through.

Any issues or questions, please contact customercareeastern@cadentgas.com.

Many thanks

Simon Hutchinson
Communications Business Partner – East of England
Cadent Gas
Web: cadentgas.com

For out of hours press officer: 0845 366 6769

[Follow us on our social networks](#)